

Historic, archived document

Do not assume content reflects current scientific knowledge, policies, or practices.

6.9.17
5/17/35
Sweet Scented Scarlet Gleam

Nasturtium



*Dazzling
in Color*



*Delightfully
Sweet Scented*



*Superior
in Type*



*Extra Large
Flowered*



*Indescribably
Lovely*

Scarlet Gleam

A fiery orange scarlet, comparable to the brilliance of Scarlet Sage. Pkt., 25c.

Glorious Gleam Hybrids

Gorgeously colored, large, well formed flowers of dazzling beauty. Colors never dreamed of before in a nasturtium abound in profusion. Pkt., 25c.

Golden Gleam

Most popular novelty of the past two seasons—golden yellow flowers on long stems. Pkt., 10c.

SPECIAL OFFER: One Pkt. Each of these Three Varieties.

Most Beautiful Novelties of Recent Years—Easy to Grow..... **49c**

*45th Annual Catalog of Superior Seeds, Flowering
Bulbs, Plants*

EMMA V. WHITE CO.

3926 Zenith Ave. S.

Minneapolis, Minnesota

Cosmos Early Klondyke . . . Orange Flare



Orange Flare is one of the most discussed and enthusiastically admired novelties on the market today. Reports received on trials sent to various parts of the world confirm the results we have obtained in our own cultures, that it is in full flower less than four months after the time it is planted.

Although Klondyke Cosmos is not a new variety, the fact that it may be had in full bloom in so short a time is unprecedented in the flower world.

The color is the same vivid orange of the ordinary Klondyke, but the attractive light green foliage is much less abundant, giving a plant which is a mass of color. The stems are long and wiry, well adapted for cutting.

Due to a limited crop it is necessary for us to quote this seed at the following price: Per Pkt., 25c; 2 for 40c.

PLEASE USE THIS ORDER SHEET

EMMA V. WHITE CO., Inc.
3926 Zenith Avenue South, Minneapolis, Minn.

DO NOT WRITE IN THIS SPACE

A

Amount Enclosed \$.....

Name Ladies, please use title Mrs. or Miss

Postoffice..... Date....., 193.....

Street and No.....

R. F. D. No..... P. O. Box No..... County..... State.....

I am interested in Landscaping my grounds and would like information and prices on a larger number of varieties of Shrubs, Rosebushes and Evergreens than contained in this catalog. (See list page 33.) Is sketch or plan enclosed?..... (Yes or no)

I am interested in Gladioli Dahlias Lilies Peonies Fruits. I would like prices on greater number of varieties than contained in catalog. See lists pages 37-39.

I would like price list of special import prices for Tulips, Hyacinths, Narcissus and other fall bulbs.

I would like price lists on perennial plants.

Enclosed please find my order for 50c or more. Please send me "Culture of Flowers." Please check, as you may have a copy.

Table with 3 columns: PKTS., FLOWER SEEDS (with subtext 'In making out your order please carry out the price'), and PRICE. The table contains the word 'SEEDS' in the first row and is otherwise empty.

CARRY AMOUNT FORWARD TO NEXT PAGE. TOTAL

Stock Ten Week . . . Porcelain Blue



Distinct in color from any other Stock now in commerce, Porcelain Blue merits a trial by every flower lover. It is large flowered and of good type, of a delightful and unusual shade of light blue, shading to a delicate blue and then white at the center of each floret. The effect is truly lovely. Pkt. 15c.

Pure bred vegetable seeds	Pages 16 to 20
Brand new flowers	Pages 1 to 8
2-year Flowering Shrubs at only 21c	Page 23
Exhibition prize-winning Gladoli	Page 37
Regal Lilies and other bulbs	Page 38
Sweet Peas—the best varieties	Back Cover
Hints on What to Plant	Page 34

AND—ALL AT PRICES YOU CAN AFFORD TO PAY

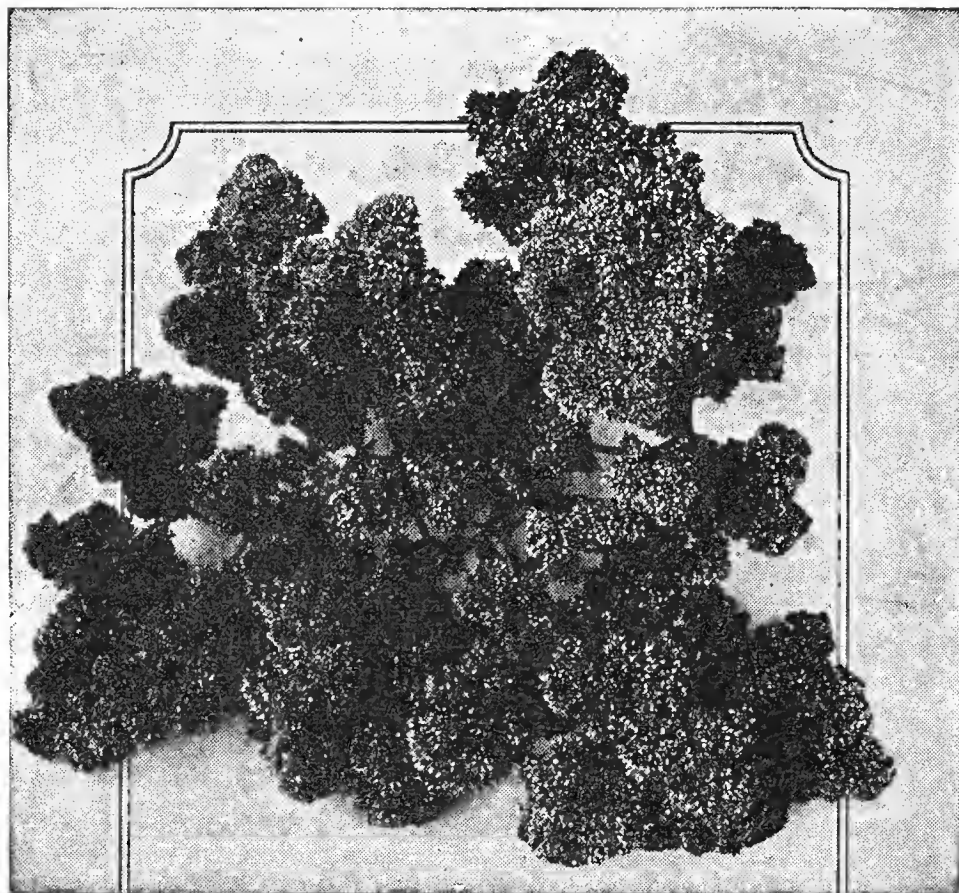
I wish to thank all of you friends and customers for your patronage of the past, which is most gratefully appreciated. I am so pleased with the increasing number of you who have won prizes at the various shows with flowers produced from my seeds. Such things spur me to greater effort to offer you the finest, not only of my own flowers, but those of other originators as well. Jan. 2, 1935.

EMMA V. WHITE.

Special Announcement—See Page 34

For the Annual Rock Garden

Chorizanthe . . Turkish Rugging



A new subject for the border or rock garden. This easily grown annual forms a dense mat of statice like flowers of a delicate pink which blends beautifully with the dull green foliage. In early fall the plant changes to a charming shade of autumn brown, which makes a bold showing at a time when Mother Nature is taking her last bow. It grows about 8 inches and has a spread of 12 to 18 inches. Pkt. 15c.

ANNUAL CANTERBURY BELL

Few flowers are more popular in the spring garden than Canterbury Bells, and we have always wished we might have them over a longer season. This is now possible, and without waiting a whole year for the first flowers from seed. The new Annual Canterbury Bells make a plant that is loaded with flowers less than five months after the seed is sown, and by making successive plantings all through the early spring we can have these lovely flowers all through the summer and early fall. The colors are the same as in the perennial type, including the various shades of blue, pink, rose and white. Pkt., 15c.

ARCTOTIS HYBRIDS

Another of the lovely flowers which have come to us lately from Africa. The hybrids come in a brilliant assortment of showy daisy-like flowers predominating in orange and bronzy red shades, but also comprising many lovely shades of rose, cream, yellow and salmon. In the milder climates they may be classed as a perennial, but in the northern latitudes they are better treated as an annual. They flower within six months from seed, and bloom profusely through the hot summer season. Pkt. 15c.

DIANTHUS—Sweet Wivelsfield

Few flowers can compare with Sweet Wivelsfield for wealth of color and length of flowering period. This new race of hardy plants is a cross between Dianthus Allwoodii and Sweet William, with larger flowers and a wider range of colors. One of the most brilliant perennial Dianthus in cultivation. Everyone should have this. Pkt. 15c.

DWARF FEATHERED COCKSCOMB—Fire Feather

Attains a height of 12 inches, consisting of 15 to 20 branches of even length, all terminated by brilliant feathery cockscombs. Fine for bedding and also good for pots. Pkts. 15c.

“NEW DEAL” PRICE—THREE PACKETS 23c (With \$1.00 order)

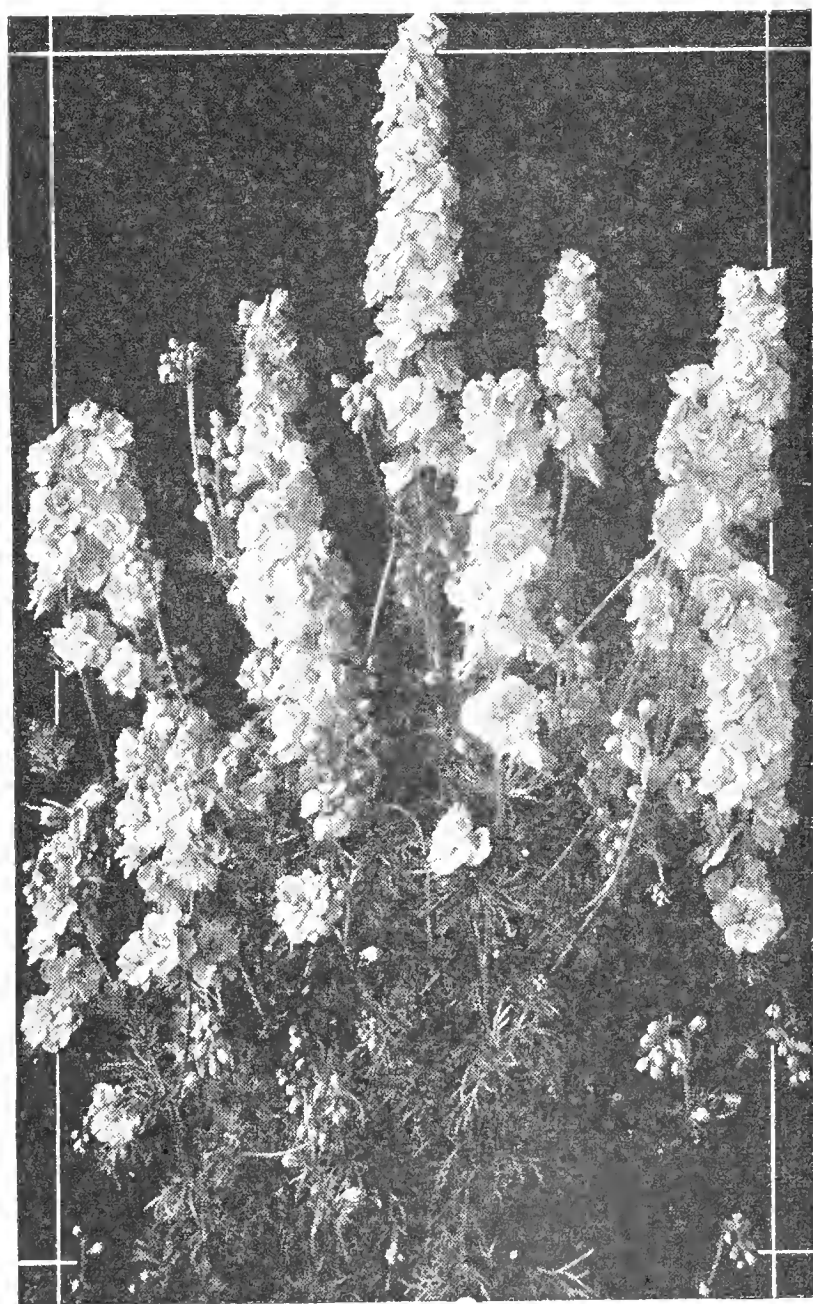
ESCHSCHOLTZIA DOUBLE GOLDEN GLORY—A welcome addition to the race of Double California Poppies, Golden Glory adds the brilliant bicolor combination of the well known Golden West to the rapidly mounting list of double varieties. Golden Glory, with its glorious profusion of golden yellow flowers deepened at the center with orange, is indeed the brightest and showiest of all Eschscholtzias, the glory of the garden. Pkt., 15c.

SALPIGLOSSIS PURPLE SELF—This is undoubtedly the richest dark variety in the Salpiglossis group, a distinct new shade. The color is a rich deep velvety purple, free from all markings, holding well until out of bloom. The flowers are large and of good substance, a striking subject for combination with other flowers, particularly red or gold shades. Pkt., 15c.

SCHIZANTHUS SUNSET HYBRIDS—This carefully bred strain is the result of our years of endeavor to produce an arrestingly bright strain of this ever popular flower. Sunset Hybrids is the accomplishment of this ideal, a well balanced blend consisting of bright red and carmine shades, each butterfly-like flower delicately marked with gold or white. The two foot plants are covered with a mass of flowers, which are excellent for cutting. One of the most easily grown garden annuals, it is also fine for pot plant use. Pkt., 15c.

Larkspur . Rosamond

Granted an Award of Merit by the Royal Horticultural Society of London, Rosamond has been acclaimed the most distinct Larkspur to be introduced in many years. It is two weeks earlier than other Stock Flowered varieties, giving a good cut before other Larkspurs are available. The height is exceptionally uniform, and the plants bear numerous good spikes heavily covered with fully double flowers. The color is new and distinct, a pure deep rose self, holding well until out of bloom. The individual florets are large and very double, evenly and closely placed on the stems. Pkt., 15c.



New Deal Price—Any four pkts. of above, 40c (with order for \$1.00)

EMMA V. WHITE'S ZINNIAS

For many years my name has been closely associated with fine Zinnias, and the development of this popular flower has been a source of great pleasure and satisfaction to me. I list, for your 1935 garden the best of the New Giant Mammoth, Dahlia Flowered, and five colors of the Liliput or Baby Zinnias. Those of you who have planted Red Riding Hood the past few years need no introduction to this charming class of Zinnias.

One of my customers in Minnesota when asked what one flower she would grow if compelled to give up all others, quickly responded "Zinnias." Her Zinnia garden of Dahlia Flowered, Red Riding Hood, Rosebud and other varieties was one of the grandest sights I ever hope to see. With small spruce and White Pine for a background, to set off the color, ranging from deepest crimson to the beautiful lighter shades, no display of flowers, which I have ever seen, could be more gorgeous.

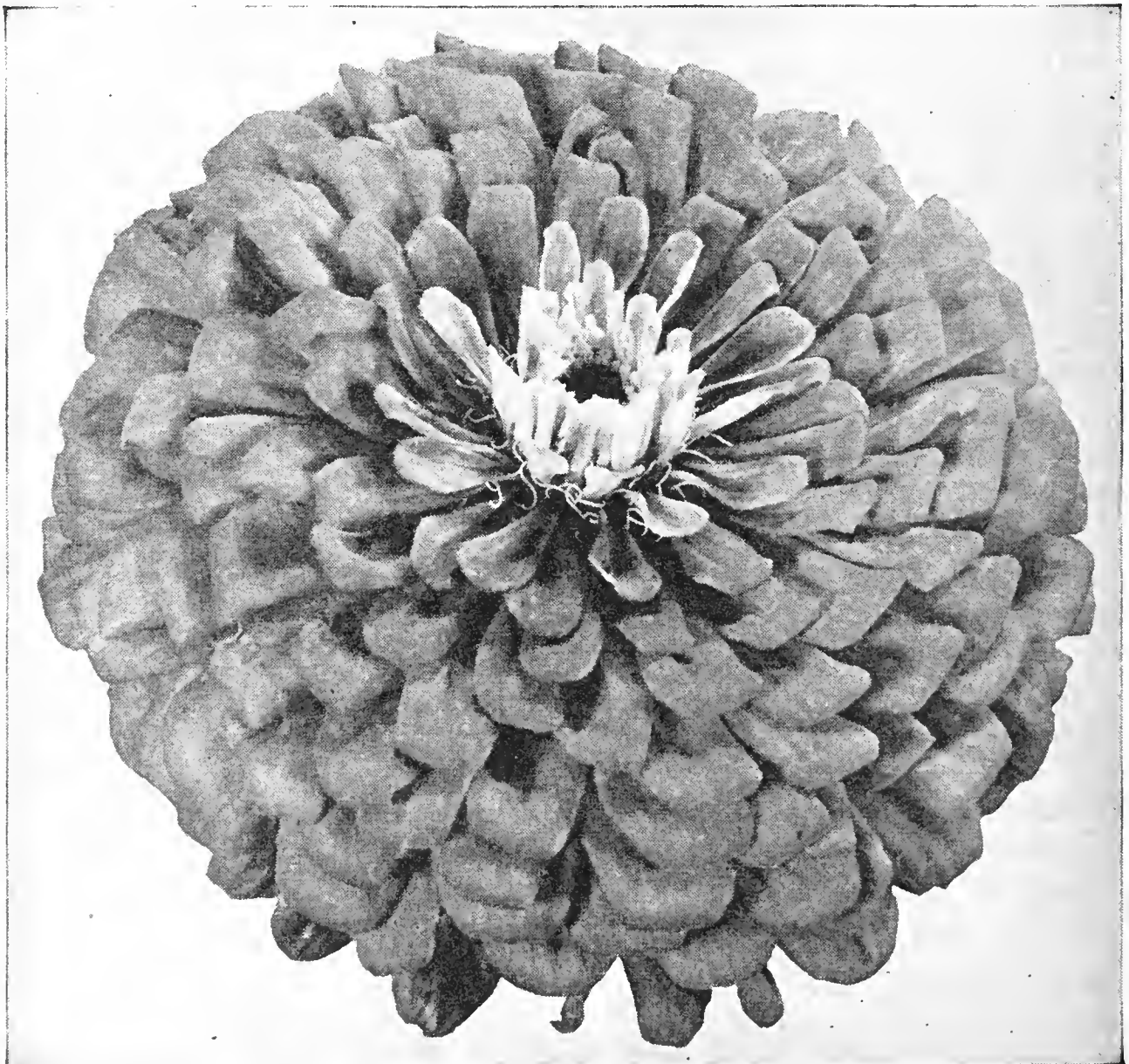
To get the most beauty and enjoyment from your Zinnias—I would like to suggest that you try this—order only named varieties and plant in blocks of solid colors. The effect will then do justice to your garden and the display will be the talk of the town. Most seed catalogs listed the Dahlia Flower Zinnia at from 20c to 35c per packet last season, and my price was 20c. In keeping with my experiment for this year, described on page 1, I am offering these at equivalent of 10c per packet. I am doing this to enable you to have a full Zinnia section this season, and I can not offer this another year, unless I sell twice as many packets to you as last year. Here is the chance you have always wanted and waited for. Think of being able to buy this gorgeous flower at no more per packet than you pay for the ordinary old fashioned Zinnias. I expect that your response to this offer will be overwhelming, and as there is always the possibility of running out of seed, please get your order in early.

I have raised some of the loveliest Canterbury Bells from your seed this year.

HATTIE S. TILLOTSON, Salisburg, Mo.

I am one of the exhibitors at the flower show here. Your Asters and Zinnias were much commented on.

MRS. N. P. THAYER, Worcester, Mass.



Giant or Mammoth Zinnias

Largest and Smallest in Zinnias

GIANT DAHLIA FLOWERED ZINNIA. Perhaps no one flower has ever won as many awards of merit and prizes at flower shows as Dahlia Flowered Zinnia. Plants are of medium height, 2 to 3 feet, bearing many long stems of the beautiful double, huge flowers, which resemble the new show type of Dahlia. Our color range is more complete this year than ever. Pkt., 15c.

BUTTERCUP. Immense deep creamy yellow.

CRIMSON MONARCH. Fine deep crimson.
Flowers very large.

DREAM. Deep lavender, turning to purple.

EXQUISITE. Light rose, with dark rose center.

LUMINOSA. Bright pink with suffusion of salmon.

METEOR. A rich glowing red.

ORIOLE. Deep orange and gold bi-color.

POLAR BEAR. Best white yet seen in Zinnias.

SCARLET FLAME. Bright scarlet with blending of orange.

GOLD MEDAL MIXTURE. A well blended mixture of the best colors.

ZINNIA TOM THUMB MIXTURE—Tom Thumb is without exception the dwarfiest zinnia known. The plants are rounded and compact, 4 to 6 inches high, literally covered with well formed flowers of the Lilliput type. The color range includes red, orange, yellow, pink, rose and other pastel shades. Price Pkt., 15c.



Zinnia Lilliput Tom Thumb Mixture

NEW DEAL PRICE—5 pkts. for 50c. (Total order must amount to \$1.00.) Not more than 5 pkts. of above to one customer at these reduced prices.

ZINNIA CALIFORNIA GIANT or MAMMOTH. This variety has rapidly gained in popularity in recent years, and this improved type is valuable to use as a background. The plants are taller than the Dahlia Flowered 3 to 4 feet, with long stems which adapt it particularly for use as a cut flower. The blooms are very large and flat, giving an unusually graceful effect.

CERISE QUEEN. Beautiful cerise rose.

SALMON QUEEN. Beautiful salmon rose.

DAFFODIL. A striking new canary yellow.

SCARLET GEM. Glowing deep scarlet.

GRENADIER. Gorgeous bright, dark red.

MIXED. Mixture of many beautiful kinds.

LAVENDAR GEM. Deep lavender.

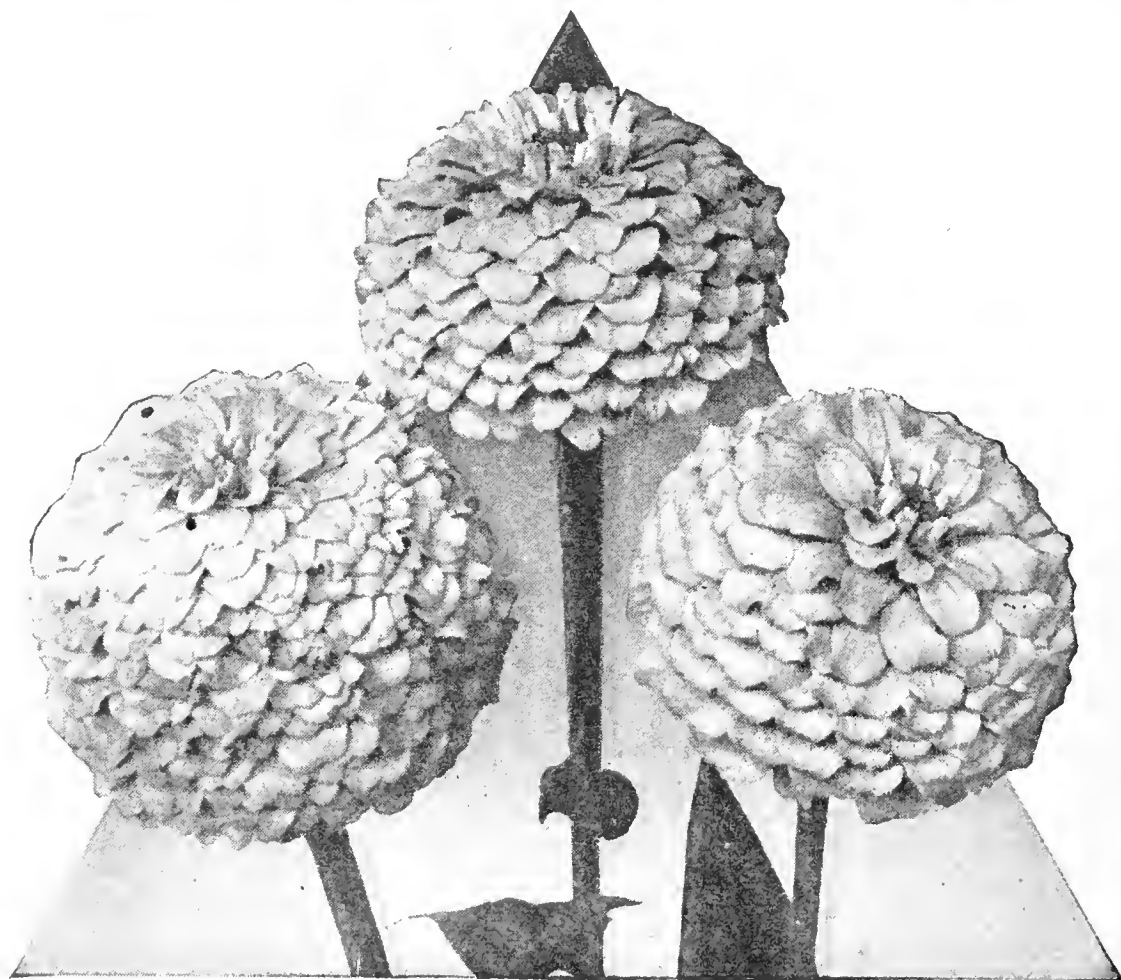
Per Packet, 20c.

"NEW DEAL" Price—Five PACKETS, 50c (With \$1.00 order). Your choice color and variety. Not more than 10 packets to a customer at this reduced price.

Every Zinnia Seed came up. Have never had finer Aster plants.

MRS. T. H. BOGGS, Aberdeen, Miss.

LILLIPUT, POMPON OR BABY ZINNIAS



Lilliput Zinnias

LILLIPUT, POMPON or BABY ZINNIAS. This dwarf flowering type is not only fine for the border but is also excellent for use in pots or window boxes. The varieties listed below are the most profuse bloomers. Greatest growth is about 18 inches high and plants are literally covered with blooms about one inch in diameter all summer. As a table or house bouquet, these dainty little flowers are unexcelled. I received many favorable comments on these in my own garden this past season.

GOLDEN GEM. The best golden yellow.

ROSEBUD. Pleasing rose-pink.

LILAC GEM. An unusual variety. Lilac.

WHITE GEM. A beautiful pure white.

RED RIDING HOOD. Gorgeous scarlet red.

MIXED. A mixture of choice kinds.

Per pkt. 10c

"NEW DEAL" Price—SIX PACKETS, 30c (With \$1.00 order). Your choice any six Lilliput Zinnias. Not more than SIX packets sold to any one customer at this price.

World's Most Beautiful Asters

For thirty years I have specialized in the growing of this superb florist's flower—the ASTER. No seed house in existence, whether large or small can offer any finer seed. I offer this year such choice sorts as the Improved Giants of California, the Giant Mammoth Peony Flowered Aster Silvery Rose, and the greatest Aster introduction of recent years—THE NEW SUPERB ASTER—LOS ANGELES, which you will find more fully described on page 14. I sincerely believe that this new race of Aster promise to supersede all other strains for cut flower use.

CULTURE: Asters can be grown with ease if a few simple directions are followed. Ask for leaflet "Culture of Aster," when you order.

To get the best results from your Asters, plant the Early Medium and Late Blooming, so that you will be sure to have continuity of bloom.

March 24, 1932.

Dear Miss White:

As I wish to raise Asters for Exhibition purposes this year I am sending my order of seeds to you as I have won prizes on your Asters for many years. I surely consider your Asters the best I have ever used. If you wish you can use this letter or refer to me.

Mrs. A. S. Pence, Duncan Mills, California.

EXHIBITION ASTERS

These are the finest strains which we have been able to grow in California. Immense blooms—good for cutting—good keeper.

EXHIBITION DARK BLUE AND PURPLE ASTERS

A mixture including these shades in the Comet, Crego, Invincible, Queen of the Market and Semple's and Royal and Upright classes. 7 sorts. PKT. 10c.

EXHIBITION LIGHT PINK ASTERS

A mixture of light pink, including all the light pink shades listed under Comet, Crego, Daybreak, Invincible, Peerless Pink, Rochester, Queen of the Market, Upright and Semple's classes; 9 sorts. PKT. 10c.

EXHIBITION DEEP PINK AND ROSE ASTERS

A mixture of these shades in the following classes: Comet, Crego, Crimson Giant, Invincible, King, Royal, Upright and Semple's; also Lady Roosevelt; 9 sorts. PKT. 10c.

EXHIBITION WHITE ASTERS

A mixture including Comet, Crego, Invincible, Rochester, Purity, Queen of the Market, Upright and Semple's; 8 sorts. PKT. 10c.

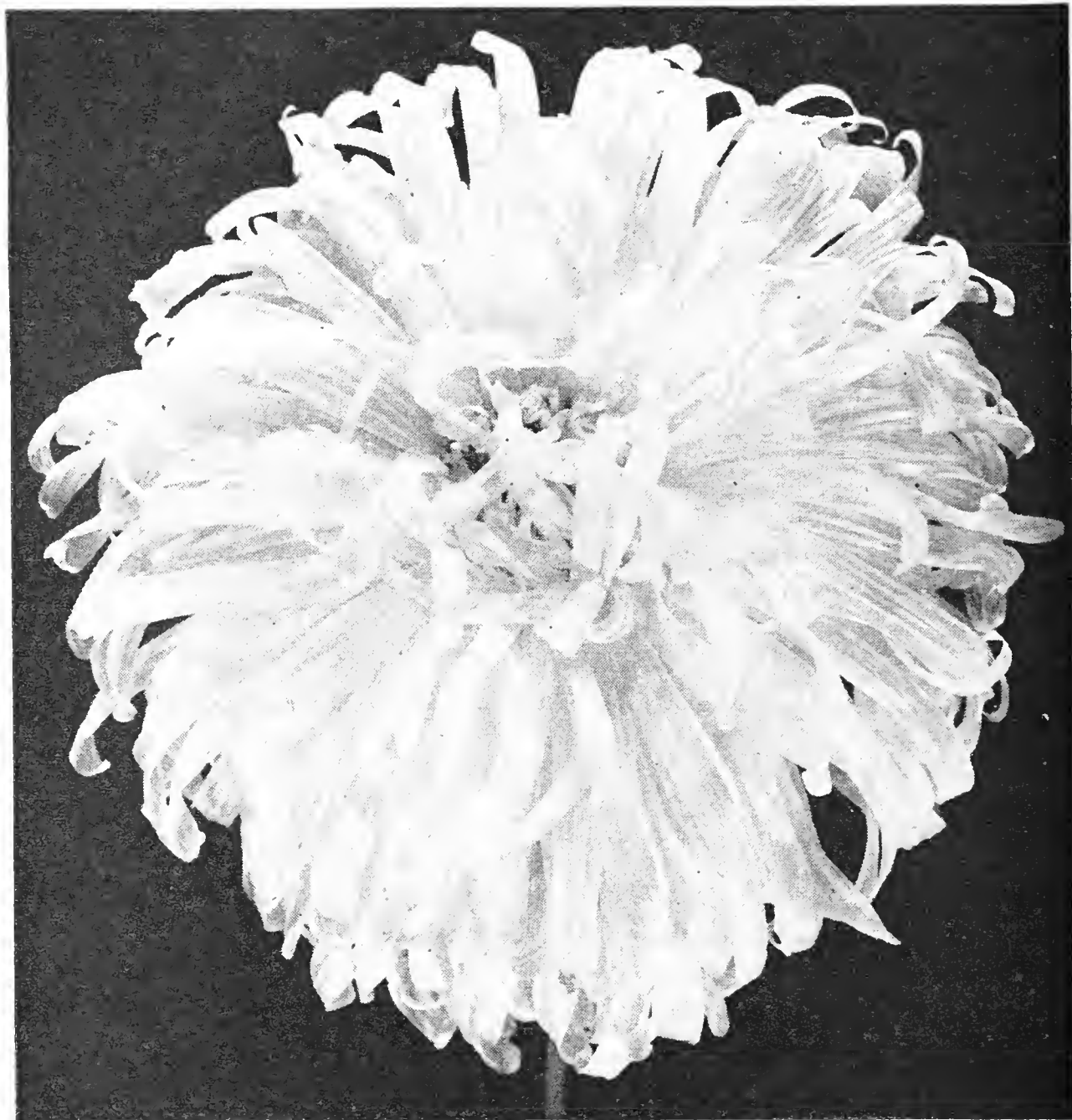
EXHIBITION LAVENDER ASTERS

A mixture including lavender shades in the Comet, Crego, Invincible, Queen of the Market, Royal and Semple's classes; also Vick's Lavender Gem; 7 sorts. PKT. 10c.

EXHIBITION MIXED

This is a special mixture which we make ourselves, including large-flowering varieties only, in an attractive range of colors, especially designed for those who are growing for exhibition or commercial purposes, and we do not hesitate to class it with the best on the market. PKT., 75 SEEDS, 8c; 1/8 OZ., 40c; 1/8 OZ. OF ANY VARIETY EXHIBITION ASTERS, 40c.

New Varieties Asters



Aster Improved Giants of California White

This beautiful curled and interlaced flower stands at the head of the list of the finer type Asters, not only for florist's use but also for private gardens, where quality is appreciated. Characterized by the well known Crego or Ostrich Feather type of flower, combined with the long non lateral stems and sturdy habit of growth of the Beauty type, this improved strain demands a place in every garden. The large flowers are packed with broad, graceful petals, borne on stems over two feet long, and plants grow from two to three feet in height, starting to flower in early July and continuing until frost. Above is a reproduction of the White, taken from blooms in my trial gardens, the past summer.

I CONSIDER THIS A MOST WONDERFUL VALUE AT PER PACKET, 25c.

PEACH BLOSSOM (opens white, flushes pink). DEEP ROSE—LIGHT BLUE—WHITE—MIXED.

"NEW DEAL" Price—FOUR PACKETS, 50c (With \$1.00 order). Your choice any four packets described on pages 12, 13, 14. Not more than eight packets to one customer at this price.

New Varieties Asters

Everyone marveled at the size and beauty of the Asters.

Mrs. Wm. H. Powers, Columbus, Wis.

ASTER LILLIPUT FLOWERED

Comparing in size with the Lilliput Zinnias, these baby flowered asters fill a very definite place in the border or cutflower garden. The flowers are tiny and buttonlike in form, coming in profuse clusters on medium length stems, lending themselves very gracefully to flower arrangement or for a colorful border in the garden. The colors are bright and clear cut, some varieties having a deeper zone at the center.

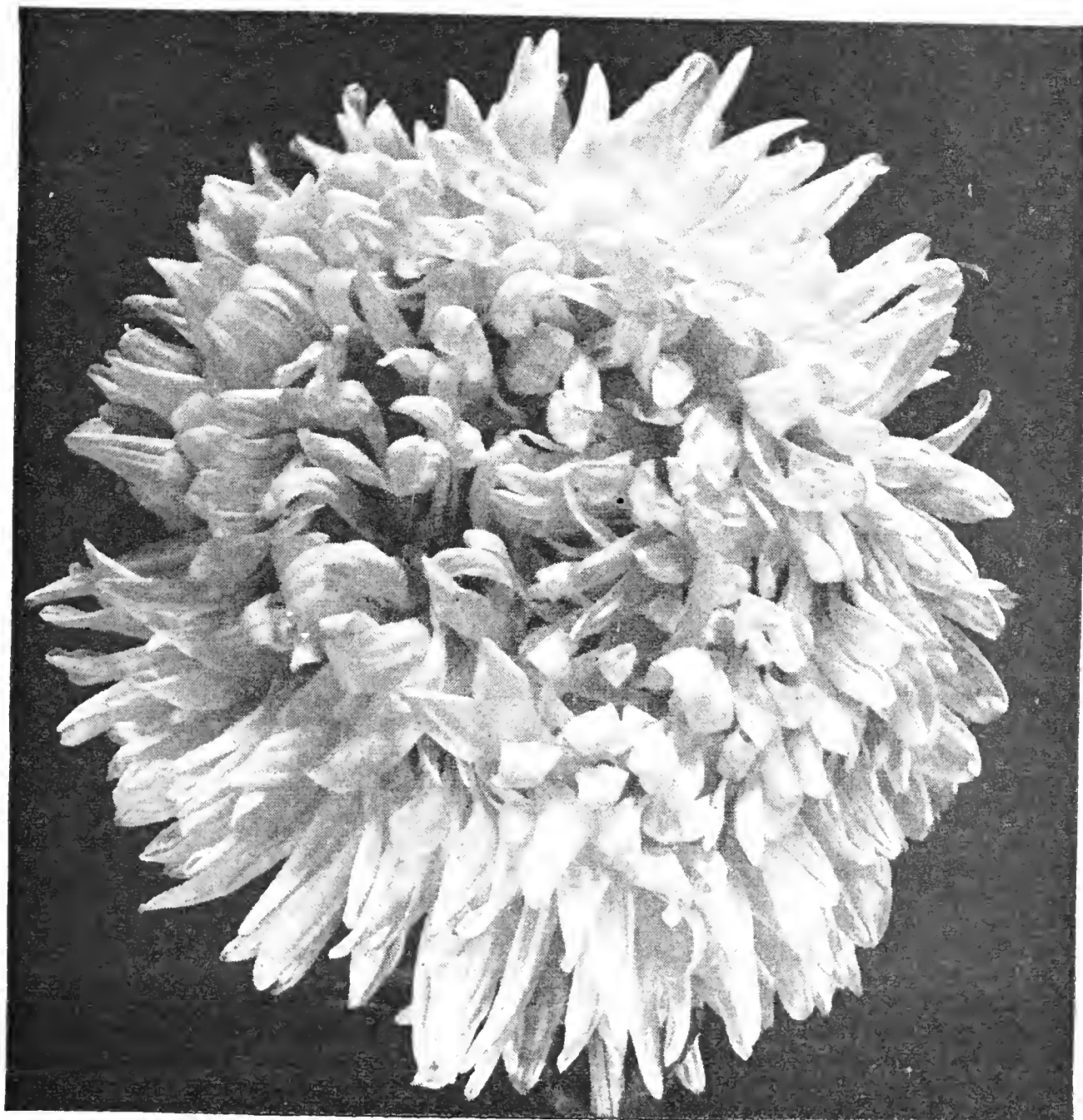
ASTER GIANT MAMMOTH PAEONY FLOWERED ROSEBUD

The color of this aster is that rare, clear deep rose which reminds one of a newly opened rosebud, still fresh with dew. The flowers are large, well formed and fully double, borne on the long stout stems characteristic of the Paeony Flowered type. Whether in the garden or in bouquets, Rosebud is a lovely addition to this large flowered strain of Asters.

ASTER GIANT MAMMOTH PAEONY FLOWERED SILVERY ROSE

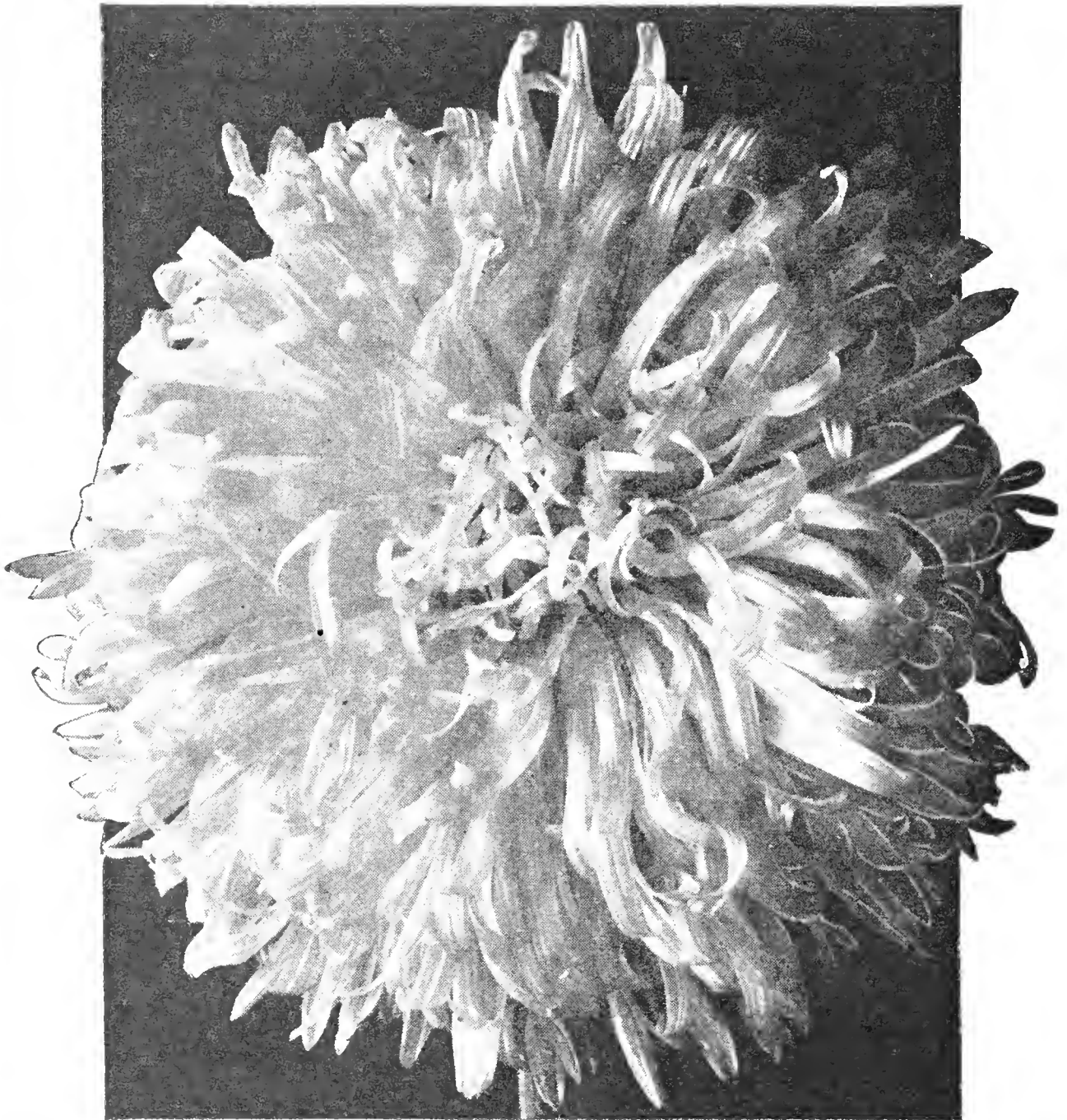
Delicate lavender pink, full petaled, large, and fully double, with just a suggestion of silvery white at the tips, this is an aster which is unique in this class. Excellent for cut flower use, the plants are fine for bedding use as well.

Above varieties, per pkt., 25c. (For "New Deal" price see page 12.)



Aster Giant Mammoth Paeony Flowered Silvery Rose

New Varieties Asters



Aster New Super Giant Los Angeles

Asters raised from your seed were mistaken for Dahlias.

Mrs. Laura Burgess, Plain, Wash.

Through cooperation with the originators, we now offer our customers the first of a new race of Asters, which promises to supersede all other strains for cut flower use.

It is of the general habit of the Giants of California, but earlier and much larger than any of the Giants of California type yet introduced, hence the name, Super Giant Los Angeles. But, while the flowers are large, they are most artistic, due to the unusual curling and interlacing of the petals, giving a light feathery effect. The chief difference in flower form between this strain and the Giants of California is in a deeper, fuller centered flower in the new strain.

The color is a pure shell pink, one that has been entirely lacking in the Giants of California. We suggest that Los Angeles be used to round out the color range in the Giants until a full color range has been developed in this Super Giant race. The stems are stronger than in the Giants of California, and unusually long, while no disbudding is necessary due to the non-lateral habit.

PRICE PER PACKET, 25c. (For "New Deal" price see page 12.)

EMMA V. WHITE'S American Beauty Asters

Similar in type and growth to the Late Branching Asters, large, full flowers with incurve petals and stout stems from 15 to 24 inches in length and longer flowering than any other aster. Should be planted early to give it a longer season of growth and it will continue blooming until killed by the frost. Especially desirable for cut flowers and recommended for florists' use.

ROSE, PKT., 10c; LAVENDER, PKT., 15c; PURPLE, PKT., 10c; SEPTEMBER PINK, PKT., 15c;
¼ OZ., \$1.00. WHITE OR MIXED, PKT., 10c

COLLECTION NO. 903—One packet each, five colors American Beauty Aster, 40c.

BALL'S WHITE FLOWER

is a sphere of pure white petals, borne on a long, stout stem, a mid-season variety. PKT., 15c; ¼ OZ., 50c.

GIANT CREGO ASTER

Pronounced by many the best Comet, or Ostrich Plume strain. The blossoms measure 4 to 5 inches, their graceful Chrysanthemum effect being heightened by the much twisted petals. PKT., 100 SEEDS, 5c; ¼ OZ., 40c. LAVENDER, PURPLE, WHITE, ROSE, MIXED.

HEART OF FRANCE ASTER

Claimed to be the best red aster ever introduced. Opens red and retains its remarkable beauty to the very end. Plants large and robust, branching type, long stems with few laterals. Flowers large and full, with never a trace of hollow center. Mid-season. PKT., 15c; ¼ OZ., 75c.

ASTERS—CALIFORNIA SUNSHINE. The new sunshine Asters are truly a beautiful type. The blooms are especially artistic, the outer petals being long and narrow, whereas the center petals are tubular in shape. Stems measure two to two and one-half feet making this variety excellent for cutting. The flowers themselves are very dainty. We offer California Sunshine in a mixture including Flesh, Pink, Carmine, Lavender and Violet at a price which should make this new novelty very attractive.

PKT. 15c; TRADE PACKET 25c

ASTER—PEERLESS YELLOW. We have been working for several years to obtain a good yellow aster and have at last developed one that is extremely good. It can be described as of American branching habit, height about two feet, flowers of good size and form, petals slightly incurved but with no trace of quills as in the earlier forms of yellow asters. The color is a deep yellow when first opened and fades slightly as it ages. PACKET 20c; TRADE PACKET 35c

QUEEN OF THE MARKET ASTERS

If you want asters at the earliest possible date, this should be in your purchase. It comes from 2 to 4 weeks earlier than any other sort and is besides a handsome flower. PKT., 100 SEEDS, 5c; 3 PKTS., 12c; ¼ OZ., 40c.

CRIMSON, BLUE, ROSE, LAVENDER, MIXED, PINK, PURPLE, WHITE.

GIANT COMET ASTERS

A splendid new type of the Ostrich Plume Aster, with large Chrysanthemum-like flowers. PKT., 50 SEEDS, 5c; ¼ OZ., 50c.

LAVENDER, PURPLE, WHITE, ROSE, CRIMSON, MIXED.

VICK'S CARDINAL

A dark red aster, splendid for bedding, making a brilliant show from early August till the close of the season. Used in a mass they are as handsome as a bed of geraniums. PKT., 50 SEEDS, 8c; ¼ OZ., 40c.

WHITE PERFECTION

In form it is like the Upright Branching, the plants being tall, with abundant flowers of exquisite shape and very double, the centers strongly whorled, and with long, strong stems, splendid for cutting. PKT., 50 SEEDS, 8c; ¼ OZ., 40c.

LADY ROOSEVELT ASTER

This is an exceedingly mammoth Aster and is a rampant grower, producing immense flowers, 5 to 6 inches in diameter. The long, broad petals are curled, giving an appearance of a graceful chrysanthemum. Color of a deep rose-pink. PKT., 75 SEEDS, 8c; ¼ OZ., 35c.

VICK'S LAVENDER GEM

The best Lavender Aster. Comet form and excelling all other Lavender Asters in its delicate shade. PKT., 50 SEEDS, 8c; ¼ OZ., 40c.

ASTER—EVERLASTING ROSE. Five years ago we introduced the Everlasting Flesh Aster which when cut and dried retained its color and shape. The past season we found a similar mutation in rose which adds another shade to this odd or fancy type of Aster. For a winter bouquet in your home be sure and plant Everlasting Rose.

PACKET 15c

Reliable Vegetable Seeds

CARROTS

NANTES. (Coreless.) Half long, stump rooted, sweet and fine flavored. Very fine grained and excellent for home garden or market. Pkt., 5c; oz., 10c; $\frac{1}{4}$ lb., 30c; lb., \$1.00.

DANVER'S HALF LONG. The second best known early half long sort, with roots 6 to 8 inches long, tapering to a blunt point. Flesh a deep orange and of high quality. Pkt., 5c; oz., 10c; $\frac{1}{4}$ lb., 30c; lb., \$1.00.

CHANTENAY. Grown under contract for the most critical Market Gardeners' trade. Of rich, dark orange color. In earliness it ranks intermediate between Danvers and the Short Horn. Of the style of the Danvers, hardly as large, but fine and more symmetrical. It is being used quite extensively by market gardeners for bunching. Pkt., 5c; oz., 10c; $\frac{1}{4}$ lb., 40c; lb., \$1.25.

SWEET CORN

COUNTRY GENTLEMAN. A sweet corn of excellent quality. Ears about 8 inches long and covered with long, white grains without being in row formation. Pkt., 5c; $\frac{1}{4}$ lb., 15c; lb., 40c; 6 lbs., \$1.50; 12 lbs., \$2.50.

GOLDEN GIANT excels all other early varieties in size, productiveness and quality, and all of the late varieties in quality and early maturity. It is the one corn for the market gardener who wants the greatest amount of the highest quality corn in the shortest period of time from the smallest piece of land. It is because of the extreme tenderness, combined with the exquisite rich sugary flavor, that the Golden Giant has become the standard of perfection for sugar corn. If you want the best and only the best all you have to do for early, medium, and late sweet corn is to plant the Golden Giant every week or ten days from the time when both the air and ground become warm until within 65 or 70 days of killing frost. Pkt., 15c; $\frac{1}{4}$ lb., 20c; lb., 50c; 6 lbs., \$2.50; 12 lbs., \$3.25.

GOLDEN BANTAM. This handsome variety is one of the most delicious of all and it is generally believed to be the richest in flavor. Is extremely early, of hardy, vigorous growth. The stalks grow only about four feet high but bear two or three good ears six to eight inches long, of handsome yellow color. In flavor it is quite distinct from the white sorts. Pkt., 5c; $\frac{1}{4}$ lb., 15c; lb., 40c; 6 lbs., \$1.30; 12 lbs., \$2.25; 48 lbs., \$9.00.

EARLY DOW. This is an improved type of early Cory. It is white and one of the sweetest corns on the market. The stalks are short with two ears to a stalk. It is an excellent market gardeners' variety. Pkt., 5c; $\frac{1}{4}$ lb., 15c; lb., 40c; 6 lbs., \$1.30; 12 lbs., \$2.40; 48 lbs., \$9.00.

BANTAM EVERGREEN. This is a cross between Golden Bantam and Stowell's. The ears are about eight inches long and twelve rowed, with broad, deep kernels. It is a fine golden yellow color. Pkt., 5c; $\frac{1}{4}$ lb., 15c; lb., 40c; 6 lbs., \$1.50; 12 lbs., \$2.50; 48 lbs., \$9.00.

CAULIFLOWER

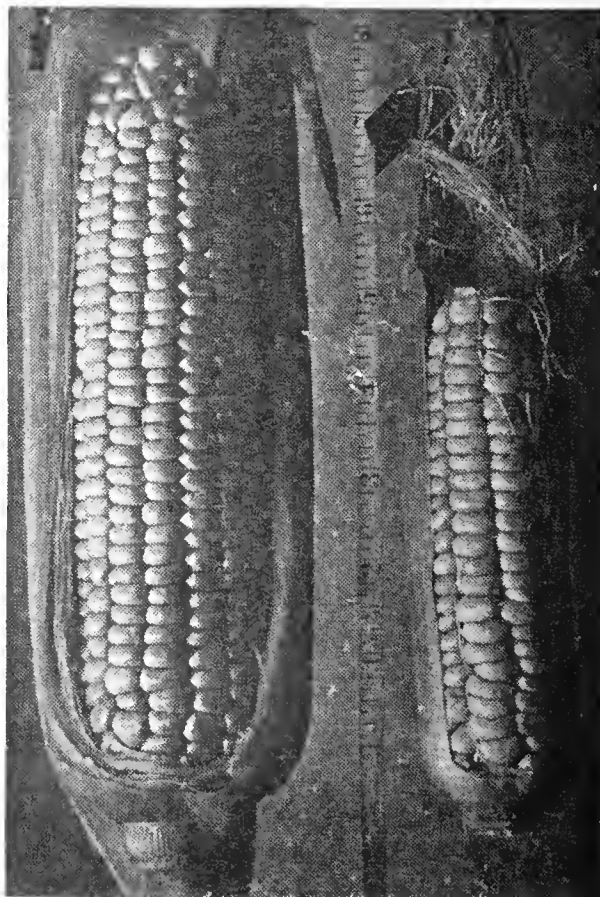
DANISH GIANT (or Dry Weather). Pkt., 20c; $\frac{1}{4}$ lb., \$7.50; lb., \$24.00.

SWISS CHARD

EUCULLUS. Pkt., 5c; lb., 90c.

WATERMELON

KLECKLEY SWEET. Pkt., 5c; $\frac{1}{4}$ lb., 40c; lb., \$1.15.



Golden
Giant

Golden
Bantam

MUSK MELON

EXTRA EARLY OSAGE. In this variety we have gained a week to ten days in earliness over the original Osage without sacrificing any of the good qualities of that sort. It is a trifle smaller and the netting extends more over the surface. The deep salmon flesh is thick and sweet and seed cavity small. Gardeners will find this a most prolific sort to grow where the market demands an Osage melon, and we also recommend it for a home garden. Pkt., 5c; oz., 25c; $\frac{1}{4}$ lb., 60c; lb., \$2.00.

PUMPKINS

NEW ENGLAND SUGAR OR PIE. Small round fruits and flattened at the ends. Skin and flesh an orange yellow. Flesh thick and of excellent quality. Pkt., 5c; oz., 10c; $\frac{1}{4}$ lb., 30c; lb., \$1.00.

PARSNIP

HOLLOW CROWN. The market gardener's favorite and more generally grown than any other variety. Roots are large and smooth and are tender with a sweet flavor. They grow to about 15 inches in length with a 3-inch crown. Pkt., 5c; oz., 10c.

RADISHES

Every one who plans a garden should have a few packages of radish seed planted. **CULTURE:** For forcing, seeds may be started in a hot bed. Seed may be sown outdoors as soon as the ground can be worked. Sow thinly and when the plants are young pull out the weakest to avoid having them crowded. We especially recommend the varieties listed below as being the best of their respective types.

EARLY SCARLET GLOBE—A very popular radish. See description on page 20.

FRENCH BREAKFAST. An oblong-shaped radish. Fine for open ground or forcing. Valued for its excellent quality and fine color, which is a beautiful scarlet on the body and white at the extremity. Flesh white, tender and mild. Pkt., 10c; oz., 15c; $\frac{1}{4}$ lb., 35c; lb., 75c.

ICICLE. A long variety of almost transparent whiteness. Produces nice roots in twenty-two days from the date of sowing, and it continues in prime condition for a long period, so that in one sowing of seed, nice, crisp radishes may be had from spring until mid-summer. It is much the most popular sort in the entire list. There is no variety that grows more uniform in type, and there are none that surpass it in quality. Pkt., 5c; oz., 10c; $\frac{1}{4}$ lb., 30c; lb., \$1.00.

WHITE STRASBURG. Of oblong, tapering shape, both skin and flesh being pure white. The flesh is firm, brittle and tender and retains its crispness even if old and large. Excellent for summer use. Very popular because it remains fit for use a long time and does not get pithy. Pkt., 5c; oz., 10c; $\frac{1}{4}$ lb., 30c; lb., \$1.00.

Winter Varieties

CHINA ROSE. A fine winter sort. It is a stump rooted type with smooth bright rose colored skin. Flesh is white and is very crisp. Pkt., 5c; oz., 10c; $\frac{1}{4}$ lb., 35c; lb., \$1.25.

ROUND BLACK SPANISH. Roots round and about three inches in diameter. Skin black

and flesh white. Pkt., 5c; oz., 10c; $\frac{1}{4}$ lb., 30c; lb., \$1.00.

LONG BLACK SPANISH. Roots about 9 inches long and 2 to 3 inches in diameter. Nearly black in color. Fine flavor. Pkt., 5c; oz., 10c; $\frac{1}{4}$ lb., 30c; lb., \$1.00.

TURNIPS

PURPLE TOP STRAP LEAF. It is flat and of medium size, very early and productive. Flesh white, tender and fine trained. It is one of the most popular turnips grown. Pkt., 5c; oz., 10c; $\frac{1}{4}$ lb., 30c; lb., \$1.00.

WHITE EGG. An early oval variety. Medium sized, white flesh a clear white, very mild and sweet. Pkt., 5c; oz., 10c; $\frac{1}{4}$ lb., 30c; lb., \$1.00.

PURPLE TOP WHITE GLOBE. One of the best for market gardeners. It is a perfect globe shape and of finest quality. Pkt., 5c; oz., 10c; $\frac{1}{4}$ lb., 30c; lb., \$1.00.

SNOWBALL. An early, medium sized, round turnip. Flesh a pure, white and very fine flavor. Pkt., 5c; oz., 10c; $\frac{1}{4}$ lb., 30c; lb., \$1.00.

RUTABAGAS

AMERICAN PURPLE TOP. Roots yellow below ground and purple above. It is large, globular and short necked. Flesh yellow and sweet. Pkt., 5c; oz., 10c; $\frac{1}{4}$ lb., 25c; lb., 75c; 5 lbs., \$2.50.

PARSLEY

CHAMPION MOSS CURLED. A beautiful curled and crumpled parsley. A uniform deep green color with finely cut leaves. Pkt., 5c; oz., 10c; $\frac{1}{4}$ lb., 35c.

SQUASHES

HUBBARD WARTED. One of the best sellers on the market. It is large and very warty. Dark bronze green in color with flesh an orange yellow color. Fine quality. Pkt., 5c; oz., 15c; $\frac{1}{4}$ lb., 45c; lb., \$1.50.

SUMMER CROOKNECK. A large early summer variety. Very warty and of a deep orange color. Pkt., 5c; oz., 15c; $\frac{1}{4}$ lb., 45c; lb., \$1.50.

WHITE BUSH SCALLOP. Very early. Fruit flattened and scalloped on edges. Has a smooth surface and a cream-white color. Pkt., 5c; oz., 15c; $\frac{1}{4}$ lb., 45c; lb., \$1.50.

DES MOINES SQUASH. "Table Queen." Vines are vigorous and very productive. Just the right size, averaging about 6 to 8 inches long and 4 to 6 inches in diameter. Color dark green, with sometimes a blotch of red at pointed end. Shell is hard and smooth, and ridged as shown in picture. Just wash it clean, cut in half, take out the seeds, bake twenty minutes and you will have the nicest squash you ever tasted. Splendid for pies. Ripens in the fall and keeps long as Hubbard. Pkt., 10c; oz., 25c; $\frac{1}{4}$ lb., 75c; lb., \$2.50.

PEAS

Extra Early Varieties

ALASKA (Earliest of All). This is a very early smooth pea. Good for canning and popular with gardeners because it is so early. Height 2½ feet, pods about 2½ inches long, round and straight and having six peas. Pkt., 5c; ¼ lb., 20c; lb., 50c; 7 lbs., \$2.50.

LITTLE MARVEL. Excellent for the kitchen garden. Grows to about 14 inches. Pods about 3 inches, rounded and with square ends. Contains 7 dark green peas. Very productive. Pkt., 5c; ¼ lb., 20c; lb., 55c; 7 lbs., \$2.50.

MAIN OR LATE CROP PEAS

TELEPHONE. An old standard, large podded pea, growing about four feet tall, with medium green foliage. Pods are about five inches long, containing 8 light green peas. It is a great producer. Pkt., 5c; ¼ lb., 20c; lb., 55c; 7 lbs., \$2.75.

PEPPERS

Large Bell or Bull Nose. Pkt., 5c; ¼ lb., \$1.75.

KOHLRABI

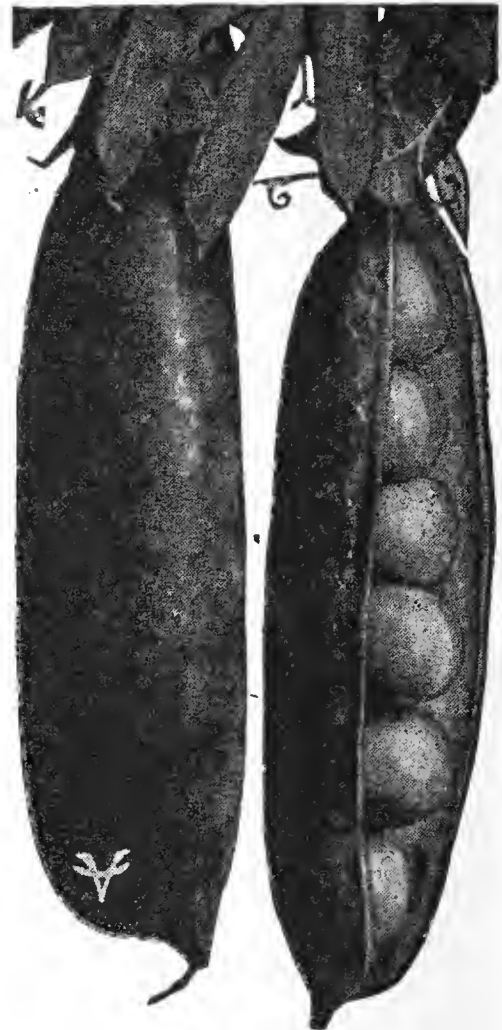
Early White Vienna. Pkt., 5c; ¼ lb., 75c; lb., \$2.50.

SALSIFY

Sandwich Island. Pkt., 5c; ¼ lb., 60c.

SPINACH

Long Season. Pkt., 5c; ¼ lb., 15c; lb., 50c.



Peas—Little Marvel

LETTUCE

Heading Varieties

BIG BOSTON. (Selected Stock.) Very popular for outside culture as well as cold frame forcing. Heads large and compact, leaves broad, almost smooth, but wavy at the edge. Color light green, slightly tinged reddish brown heart greenish white tinged yellow. Pkt., 5c; oz., 30c; ¼ lb., 75c; lb., \$2.50.

NEW YORK. Excellent for mid-summer and a good heat resister. Heads large, crisp, tender and sweet. Slow to seed. Fine for the market and home garden. Pkt., 5c; oz., 40c; ¼ lb., \$1.00; lb., \$3.50.

THE BEST ONIONS

LARGE RED WETHERSFIELD. One of the oldest and best known types. Large, rather flat and of a purple red color, a great producer and keeper. Pkt., 5c; oz., 20c; ¼ lb., 60c; lb., \$2.00; 10 lbs., \$19.00.

SOUTHPORT WHITE GLOBE. Selected Stock. A handsome onion that usually brings the highest prices on the markets. This onion is the favorite of the home gardener and also of the market gardener. They yield abundantly medium large, well shaped bulbs. The flesh is firm and white and very mild flavored. Our stock is from high grade bulbs and has proven itself to be very uniform and productive. They stand shipping very well. Pkt., 5c; oz., 30c; ¼ lb., 90c; lb., \$3.00; 10 lbs., \$27.50.

PRIZETAKER. A light yellow globe onion. It is large and mild and very productive. Pkt., 5c; oz., 25c; ¼ lb., 75c; lb., \$2.25; 10 lbs., \$21.00.

Loose Leaved Varieties

GRAND RAPIDS. The favorite among the loose-leaved varieties, doing well when planted outside. Leaves excessively blistered and crumpled, with fringed borders. Color very light green, no trace of brown. A handsome and attractive lettuce. Our stock is noted for its excellence. Pkt., 5c; oz., 20c; ¼ lb., 65c; lb., \$2.00.

SIMPSON. (Black Seeded.) A very popular early variety, succeeds most anywhere, and a reliable lettuce. Has broad, crumpled and blistered leaves. The color is a light green. Pkt., 5c; oz., 20c; ¼ lb., 65c; lb., \$2.00.

PRIZEHEAD. A large loose-headed variety. Leaves much crumpled and decidedly frilled at edges. Color of a bright green and brown and it is a fine quality lettuce. Pkt., 5c; oz., 20c; ¼ lb., 65c; lb., \$2.00.

HERBS

DILL. Used extensively in pickle making where both foliage and seeds are of value. Pkt., 5c; oz., 15c; ¼ lb., 40c.

LAVENDER, COMMON. A fragrant herb used for flavoring. Pkt., 5c; oz., 20c; ¼ lb., 60c.

MARJORAM, SWEET. One of the most popular sweet herbs. Pkt., 5c; oz., 25c; ¼ lb., 75c.

SAGE. Leaves used for flavoring meats. Pkt., 5c; oz., 50c; ¼ lb., \$1.50.

SAVORY SUMMER. An herb that gives a delicious flavor to pickled beans. Pkt., 5c; oz.,

ASPARAGUS

PALMETTO. Stalks frequently measure 2 inches in diameter, and even when of extra length are perfectly tender when cooked. Pkt., 5c; oz. 10c; ¼ lb. 30c; lb. \$1.00.

BEANS

Dwarf Wax Varieties

PENCIL POD BLACK WAX. Long, slender, round pods, very tender and brittle, and of a dark yellow color. Free from strings and fibre and very early. Pkt., 5c; ¼ lb., 15c; lb., 45c; 5 lbs., \$1.75; 15 lbs., \$3.00; 60 lbs., \$11.00.

IMPROVED GOLDEN WAX. A most popular variety and this popularity is due largely to the fact that the strain is a great improvement on the old Golden Wax, having larger pods and being more prolific. It is one of the handsomest beans, the pods a rich golden yellow, of perfect shape and rust proof. Best for family. Pkt., 5c; ¼ lb., 15c; lb., 45c; 5 lbs., \$1.75; 15 lbs., \$3.00; 60 lbs., \$11.00.

Green Pod Varieties

STRINGLESS GREEN POD. A stringless green pod bush bean. Surpasses all others in crisp, tender flavor. Finely shaped, long green pods, absolutely stringless. Of immense value to market gardeners and amateurs who seek an early bean. Packet, 10c; ¼ lb., 15c; lb. 45c; 5 lbs., \$1.75; 15 lbs., \$3.50; 60 lbs., \$12.00.



Beet—Detroit Dark Red

POLE BEANS

KENTUCKY WONDER. The greatest favorite among the pole varieties. Early and a great producer. Pods about nine inches long, round, crisp and free from strings. Pkt., 5c; ¼ lb., 15c; lb., 35c; 5 lbs., \$1.50; 15 lbs., \$4.00.

BUSH LIMA BEANS

BURPEE'S IMPROVED BUSH LIMA. Beans and pods are both larger than the old type. Pkt., 5c; ¼ lb., 15c; lb., 50c; 5 lbs., \$2.25; 15 lbs., \$6.00.

TABLE BEETS

DETROIT DARK RED. A smooth globe shaped beet with small top. Flesh dark red, tender and sweet. The best for the market gardener and for canning purposes. Pkt., 5c; oz., 10c; ¼ lb., 30c; lb., 90c.

CROSBY'S EGYPTIAN. Very early and of excellent shape and color. Skin dark red, flesh a trifle lighter. Tops small. Pkt., 5c; oz., 10c; ¼ lb., 30c; lb., 90c.

CUCUMBERS

Cucumbers like warm, sandy loam, and should be sown when all danger of frost is over. For pickles only, sow about June 1st. The hills should be about four feet apart each way. Sow thickly about one-half inch deep and later thin out to about four plants to a hill. One ounce will seed over fifty hills.

DAVIS PERFECT. Dark, glossy, green, slim and symmetrical, with an average length of 10 to 12 inches. When ripe they turn white without yellow. Quality fine as seeds are very soft when fit for table use. Very tender, brittle and of exceptional flavor. Pkt., 5c; oz., 20c; ¼ lb., 70c; lb., \$2.00

EXTRA LONG. A popular sort of White Spine with market gardeners. Beautiful, long, smooth and straight fruits of fine, shiny, dark green color with white, crisp, tender flesh. Pkt., 5c; oz., 15c; ¼ lb., 55c.

BRUSSELS SPROUTS

LONG ISLAND IMPROVED DWARF. This is an acclimated American type and will resist the changes of climate better than the European varieties. It is dwarf, with good sized sprouts almost round in shape. Pkt., 5c; oz., 30c; ¼ lb., \$1.00. 1 lb., \$3.50.



Chinese Cabbage—See Page 20

BOSTON PICKLING. Fruit short, smooth and of bright green color. Very productive, making an excellent pickle. Pkt., 5c; oz., 15c; ¼ lb., 50c; lb., \$1.50.

CABBAGE

EARLY JERSEY WAKEFIELD. A popular early variety, heads solid and pyramidal in shape. Pkt., 5c; oz., 25c; $\frac{1}{4}$ lb., 85c; lb., \$3.00.

ALL SEASONS. Heads round and very deep. Can be planted for early or late crop. A fine cabbage to keep and excellent for kraut making. Pkt., 5c; oz., 25c; $\frac{1}{4}$ lb., 90c; lb., \$2.75.

BABYHEAD. Forms very solid, round small heads. Has few outer leaves so it can be set quite close in the row. It is a first early type and is one of the best for forcing in your hot-bed or for the home garden. It is of excellent quality and is ready about seven weeks after planting. Its earliness will make it a money maker for the gardener and for its flavor it cannot be equalled. Pkt., 10c; $\frac{1}{2}$ oz., 60c; oz., \$1.00; $\frac{1}{4}$ lb., \$3.00.

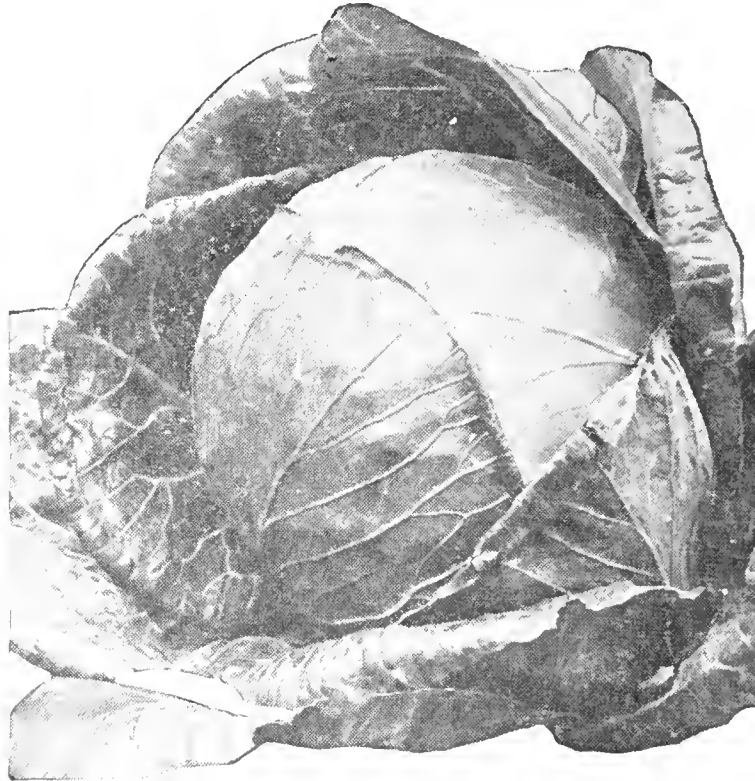
COPENHAGEN MARKET. A fine early cabbage that will be found to be a very profitable one. Heads round, medium size, very solid and of fine quality. Pkt., 5c; oz., 45c; $\frac{1}{4}$ lb., \$1.50; lb., \$5.00.



Radish
Early
Scarlet
Globe

CHINESE CABBAGE

PE TSAI. Produces a long top or head 12 to 15 inches long, and 4 to 5 inches in diameter, which blanches to a beautiful clear white. Sow in hot beds for early or treat as late cabbage for winter use. It resembles in growth Romaine or Cos Lettuce. The leaves are large, have broad ribs and are exceedingly tender. Pkt., 5c; oz., 35c.



Copenhagen MKT

RADISH

EARLY SCARLET GLOBE RADISH. The most popular Radish for either indoor or outdoor culture. In fact more Searlet Globe Radishes are grown than all the other red sorts combined. It is the standard and if you grow it you can always find a ready market for it. We have an exceptionally fine stock of this seed and we believe that it has made a name for itself. The roots are fairly large, of excellent globe shape and it has a small top. The color is a bright scarlet and the flesh is very crisp and tender. Packet, 5c; oz., 10c; $\frac{1}{4}$ lb., 35c; lb., \$1.25; 10 lbs., \$10.00; 25 lbs., \$22.50.

TOMATOES*John Baer Tomato*

JOHN BAER. An extra early scarlet fruited variety of superior merit. The vines are very hardy and exceptionally productive. The fruits are the largest of the extra early sorts and are also most attractive in color. They are nearly round, smooth, firm and of excellent quality. It is one of the very earliest to ripen its fruits and it continues to furnish marketable fruits much longer than other very early varieties. It is an invaluable sort for market gardeners, shippers and canners. Pkt., 10c; $\frac{1}{2}$ oz., 30c; oz., 50c; $\frac{1}{4}$ lb., \$1.50; $\frac{1}{2}$ lb., \$2.50.

AVON EARLY. New, extra early scarlet fruited variety. Produces good sized fruits, round or slightly flattened, deep scarlet in color, smooth, free from cracks and of fine quality. Very productive, as early as Earliana and bearing for a longer time. Pkt., 15c; $\frac{1}{2}$ oz., 50c; oz., 80c; $\frac{1}{4}$ lb., \$2.75.

EARLIANA. The earliest of the early tomatoes. Very productive of round, smooth, solid fruits. Color scarlet and the quality is unexcelled. Pkt., 5c; $\frac{1}{2}$ oz., 20c; oz., 30c; $\frac{1}{4}$ lb., \$1.00.

KOHLRABI

EARLY WHITE VIENNA. Very early and has exceptionally small tops. Bulbs of medium size, whitish green and very hardy. Pkt., 5c; oz., 20c; $\frac{1}{4}$ lb., 75c; lb., \$2.50.

ADD 5c EXTRA POSTAGE PER POUND

Climbing Vines and Flowers

HYACINTH BEAN

Rapid climbers; ornamental in all stages, foliage, flower, and pod. PKT., 10 SEEDS, 5c; ANY 3 PKTS., 12c; OZ., 15c.

PRINCESS HELEN OR "DAYLIGHT." Long spikes of snowy white flowers, followed by equally snowy white pods.

PURPLE OR "DARKNESS." Both blossoms and pods are a glossy dark purple.

SCARLET. Blush, deepening to dark red.

MIXED. All the above mixed.

SCARLET RUNNER

Highly ornamental as well as useful, both in foliage and flower and as pretty a climber as many of its more aristocratic neighbors, and the beans are good for the table if one wishes. PKT., 12 SEEDS, 5c; OZ., 10c.

JAPANESE KUDZU VINE

(PUERARIA THUMBERGIANA)

This remarkable vine, often called "Jack-in-the-Beanstalk," will grow anywhere in the best or poorest soil. The growth is very rapid and it oftentimes reaches a height of 75 feet in one season. Fragrant purple flowers resembling a purple Wistaria. Invaluable for covering porches, etc. PKT., 15c; ¼ OZ., 45c; ½ OZ., 60c.

MORNING GLORY

JAPANESE MORNING GLORY

The rich, velvety colorings of the common Morning Glory are intensified in these gorgeous varieties. Mixed. PKT., 50 SEEDS, 5c; ½ OZ., 10c.



CARDINAL CLIMBER

We feel that everyone who has a flower garden should have this favorite climber. The vine quickly reaches a height of 30 feet or more. The blossoms are about 1½ inches in diameter, in clusters of five to seven blooms each, and as the name indicates, are of a rich cardinal red. It likes sun and good soil, and develops to perfection in a sandy loam soil. If started in the open do not sow until warm weather as the seed will rot in cold wet ground. File each seed, or slightly cut through the outer covering, soak in lukewarm water over night, and sow in a warm place. PKT., 10 SEEDS, 12c; ⅓ OZ., 50c.

CARNATION-ENFANT DE NICE. Best Annual Carnation to date. Comes very true from seed, with about 90 per cent double. Mixture includes rose, deep red, salmon, white, etc. Per Pkt., 15c; 2 for 25c.

(NEW SALVIA) Early Harbinger. Unrivalled for its dazzling color, in masses or as specimen plant. The dark green foliage forms a fine background for the striking scarlet spikes. Everyone should have this. Per pkt., 15c.

MORNING GLORY - ROSE MARIE. Beautiful deep rose of double and semi-double form. The finest Morning Glory. Per Pkt., 10c.



Carnation
Enfant
De Nice
(Half Size)



New Salvia

Emma V. White's

Select Plant List

SPECIAL SELLING— BEDDING PLANTS By MAIL POSTPAID

GERANIUMS. Beautiful large plants, in bloom. Suitable for cemetery, window boxes, potted plant. Each, 25c. 5 for \$1.00; 12 for \$2.00 postpaid. Available in red, pink, white.

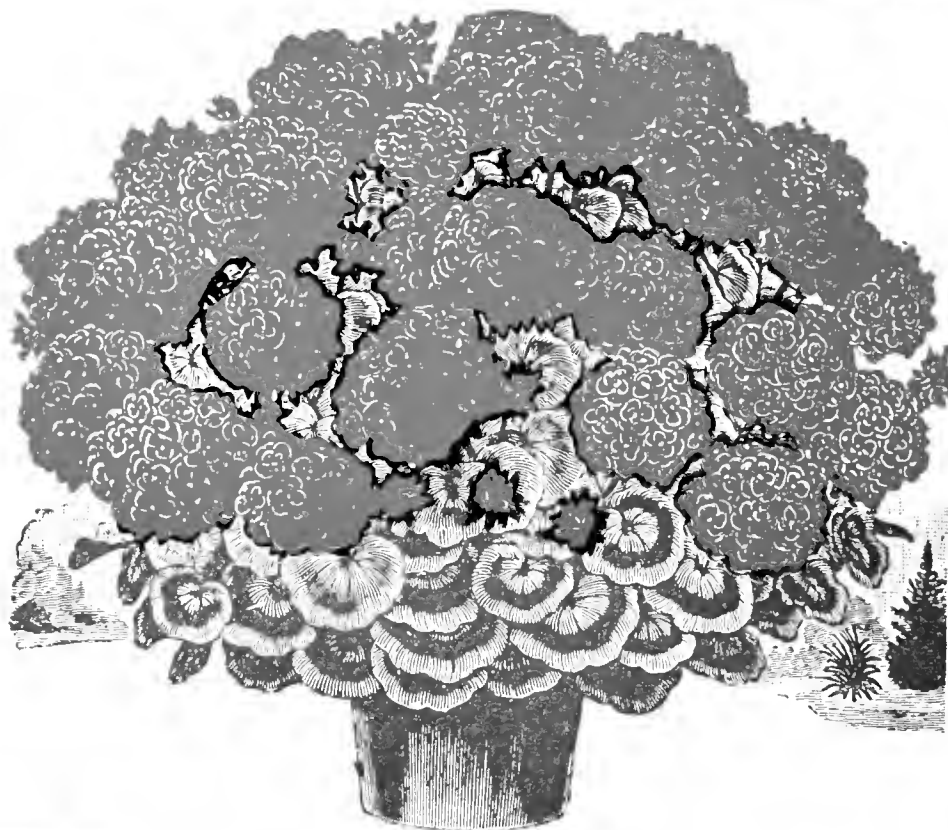
COLEUS. Attractive foliage plants, excellent for edging and borders.

VINCA VINES. Good, healthy bushy plants. Fine for urns or window box.

DAISIES. Magnificent plants, in full bloom.

Price above plants: Ea., 25c; 5 for \$1.00, 12 for \$2.00 postpaid.

Order a dozen assorted bedding plants for delivery to you in full bloom on Memorial Day.



HYBRID EVERBLOOMING TEA ROSES

- COLUMBIA—Bright pink.
- KILLARNEY QUEEN—Shell pink.
- PINK RADIANCE—Brilliant pink.
- LOS ANGELES—Pink gold.
- ETOILE DE FRANCE—Rose red.
- GR. AU. TEPLITZ—Dark scarlet.
- RED RADIANCE—Clear red.
- TALISMAN—Yellow red.
- K. A. VICTORIA—Creamy white.
- WELLINGTON—Buff yellow.
- SOUV. DE CL PERNET—Sun yellow.

CLIMBING ROSES

- CL. AMERICAN BEAUTY—Rose red.
- CRIMSON RAMBLER—Crimson.
- DOROTY PERKINS—Pink.
- GOLDFINCH—Yellow.
- PAUL'S SCARLET CLIMBER—Scarlet.

EACH 36c postpaid; 2 for 60c. Mixed Roses. All good varieties, 3 for 60c; 6 for \$1.00. Not less than three sold.

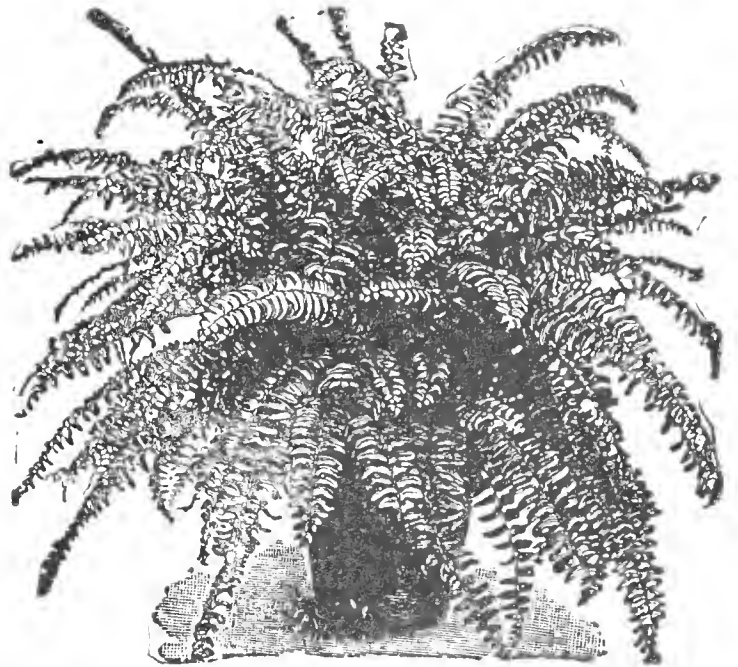
Special Prices . . Ferns . . Shrubs

BOSTON FERNS. An unusual purchase, enables us to offer you exceptionally fine fern at the low price of each, 21c, 6 for \$1.00.

SPECIAL COMBINATION OFFER—ONE FERN and one pkg. FERNOLA (plant food), 26c. An outstanding value.



FERNOLA—The finest plant food for ferns and house plants. Pkg., 13c. 2 for 25c Postpaid.



FLOWERING SHRUBS

2 yr. 18 to 24 inches. Roots wrapped.

Almond Dol Flowering. Stems studded with small bright pink flowers. Very attractive.

BUTTERFLY BUSH. Grows 2 to 4 ft., with spikes of bluish violet flowers. Attracts butterflies.

HONEYSUCKLE. One of the hardiest. Pink flowers.

SWEET MOCK ORANGE. Tall, hardy bush. Bears profuse white flowers in June.

BRIDAL WREATH (Spirea)—Fine plants of this old favorite. Covered with white blooms in May and June. One of the finest of all shrubs.

PINK HYDRANGEA. Magnificent landscape shrub.

PURPLE LILAC. The familiar species of all fine gardens.

PRICE Each, 21c Postpaid.

Any Six, \$1.00

HARDY EVERGREENS

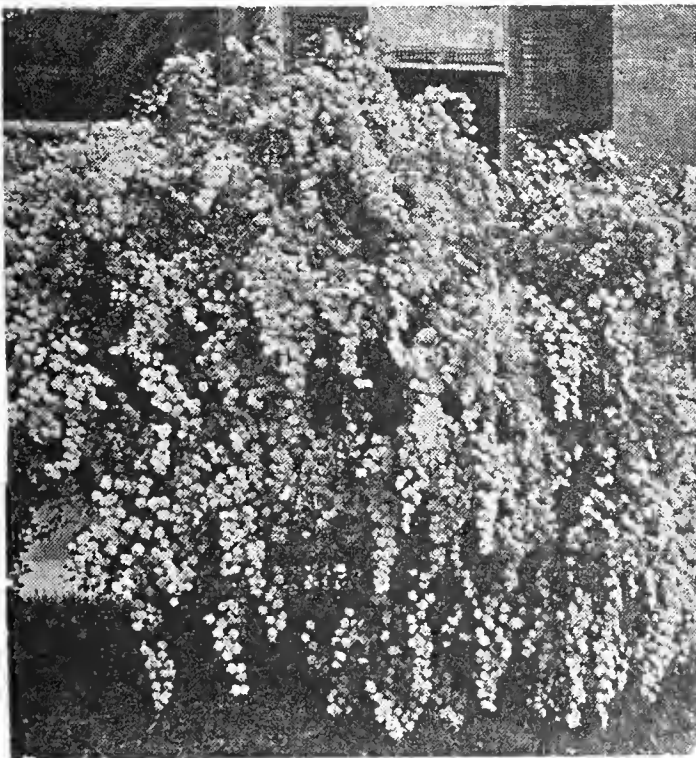
6 yr.; Transplants—Wrapped in Moss—
12-15 in.

BLACK HILLS SPRUCE. Native of the Black Hills of South Dakota.

AM ARBOR VITAE. Good for hedges or foundation plantings.

BLUE SPRUCE. Slower growing. Very beautiful.

DOUGLAS FIR. Heavy, soft green foliage. One of America's most enduring evergreens. Each, 39c; 2 for 70c; 12 for \$3.00.



Bridal Wreath (Spirea Van Houttei)

CLIMBING VINES

SELF CLINGING IVY. Fine for walls, porches, etc.

HONEYSUCKLE VINE. Clusters of scarlet flowers. A very satisfactory climber. Each 21c; 6 for \$1.00.

NOTE—All shrubs, plants and bulbs sent after all danger of frost is past—between April 1 and May 1.

Emma V. White's Pansies

Pansies in addition to being profuse bloomers are easily grown from seed. For best results start the seed indoors early in March or outdoors as early as the ground can be prepared. If sown during August and September the plants will bloom very early the following spring. We have listed only the finest varieties.

PANSY ENGELMANN'S STRAINS

Nowhere are pansies more loved or better understood than in England, the home of Mr. Engelmann. In the Engelmann establishment an infinite amount of care is taken to produce nothing but the finest types of extra large pansies in a great variety of shades. The Special Strain is the old Scottish Show type, reselected to a strain of immense flowers, in the bronze and reddish shades. The Giant Strain has a wide range of colors, both dark and light. Both strains are compact and early flowering. The mixture which we offer is very fine. Pkt. 25c.

NEW SUPERB MAMMOTH BLOTCHED GIANT PANSIES

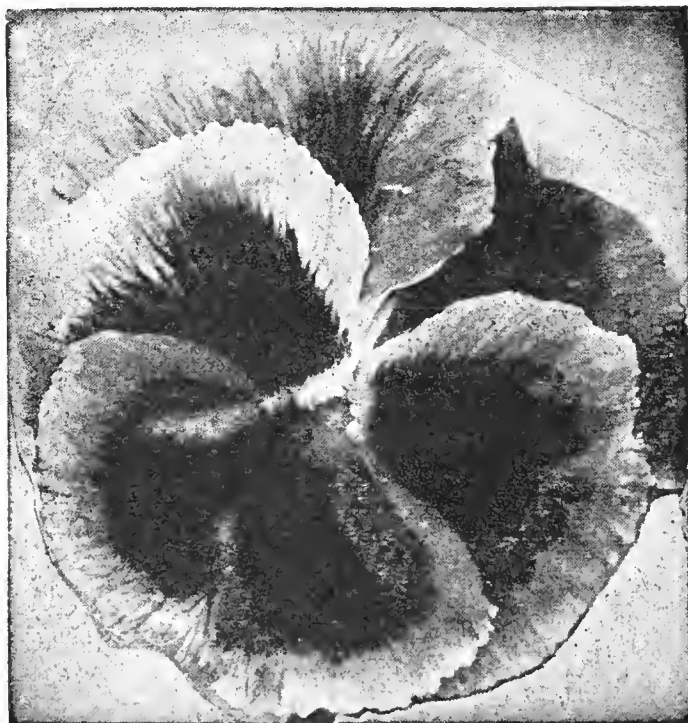
By far the most beautiful, most striking Pansy we have ever offered. The plants are of very robust growth with exceptionally vigorous foliage. Produces five-spotted flowers of enormous size on long, graceful stalks. Individual petals are exceedingly broad and cover each other in a manner which makes the flowers appear double. The border of nearly every petal is undulated and curled, making an appearance entirely new to the pansy family.

Most noticeable of all in this wonderful strain is the brilliancy and richness of color. Mixture contains many different colors including some entirely new shades of red and brown. Our quantity of seed is limited, so would advise early selection. Order some of these seeds this year and your Pansy Garden will be the talk of the town.

TRIAL PKT., 25c; LARGE TRADE PKT., 40c; 1/8 OZ., \$2.00

PANSY, FIRE KING

One of the finest pansies produced in recent years. Color a fiery red. Vigorous growth and produces a flower of rare merit. PACKET 15c.



Giant Pansy

DANISH BEAUTIES

Remarkably beautiful new strain of Pansies in mixture, composed of rich self-colors and large flowers with curled petals. A bed of this class creates a peculiarly bright and light appearance. PKT., 100 SEEDS, 10c; TRADE PKT., 50c; 1/4 OZ., \$1.60.

COLLECTION NO. 113. One packet each of Giant Exhibit, Mammoth Blotched and Danish Beauty Pansies, 38c.

EXHIBITION PANSIES

Especially selected. We are offering this season, in this carefully selected strain from only the largest and most perfect flowers, the best Pansy strain we have ever sold. It includes our attractive frilled Masterpiece, the many unusual shades of Madam Perret, or Red Pansies, and all our other charming named varieties of the Giant-flowering sorts, and is unexcelled in size, variety and beauty of bloom.

PKT., 100 SEEDS, 12c; TRADE PKT., (about 1,000 seeds), 75c; 1/4 OZ., \$2.25; OZ., \$8.00.

FINEST MIXED PANSIES

A splendid mixture, including all the best bedding varieties, together with numberless other shades and combinations, a rare mixture. PKT., 100 SEEDS, 5c; TRADE PKT. (1,000 SEEDS), FOR 30c; 1/4 OZ., \$1.00.

SWEET SCENTED PANSIES

Viola Cornuta or Tufted Pansy. The latest fad in parks and gardens. They are a cross between the pansy and the violet, and have the delightful perfume of the latter with blossoms more like the pansy, only much smaller. Plant them in masses and they will cover the beds with sheets of bloom throughout the season. Mixed. PKT., 100 SEEDS, 6c; 1/8 OZ., 45c.

GIANT PANSIES

KING OF THE BLACKS. New, nearly all jet black, very beautiful.

MAHOGANY COLORED. True mahogany, very impressive variety.

PRINCE BISMARCK. The color of this beautiful pansy is gold-bronze-marbled. Choice German seed imported especially for us.

VIOLET BLUE. A charming new color, very rare. Price of the above varieties, PER PACKET, 100 SEEDS, 10c; 3 PACKETS, 25c.

New Giant Snapdragons

Words fail to adequately describe the glorious colors found in the New Giant Snapdragons. Well-grown plants produce magnificent tall spikes, each closely set with beautiful well formed flowers. The Giants outclass anything yet seen in Snapdragons in color, size of bloom and rugged habit. Order liberally of these grand flowers.

APPLE BLOSSOM. Rosy pink, golden yellow lip.

BUNCH OF LILAC. Lilacy purple.

GOLDEN QUEEN. Deep yellow.

PURPLE KING. Deep glowing purple.

CANARY BIRD. Canary yellow with golden yellow center.

CATTLEYA. Rosy lilac.

INDIAN SUMMER. Velvety copper.

RUBY. Rich velvety red.

SNOWFLAKE. Pure white with yellow tube.

WALLFLOWER. Brownish orange, copper red.

MAJESTIC MIXTURE

A glorious mixture of the above and many other fine kinds. Among the other colors contained are old rose, maroon, purple, carmine, brownish orange, etc. Pkt. 15c; $\frac{1}{8}$ oz., 65c.

"NEW DEAL" PRICE—Any of the above: Pkt., 15c; any six pkts., 45c, if total order for seeds amounts to \$1.00.

OTHER SNAPDRAGONS

One of the finest bedding plants, being constantly in bloom throughout the summer. Should be started early. 1 to 1½ feet. PKT., 300

SEEDS, 5c; 1-16 OZ., 25c.

COTTAGE MAID. Pink, white throat.

CRIMSON QUEEN. Bright crimson.

DEFIANCE. Orange red.

FAWN. Terra cotta pink and pale yellow; extra fine.

GOLDEN QUEEN. Rich deep yellow.

QUEEN OF THE NORTH. Pure white.

FIREBRAND. Rich deep red.

COLLECTION NO. 115. One full pkg. each of the above 7 sorts, 28c.

MIXED TOM THUMB. This class produces pretty little bushes about six inches high and are especially adapted for edging. PKT. 5c; 1-16 OZ., 25c.

GIANT MIXED. A splendid mixture of these old-fashioned favorites, including those named above and many other brilliant shades. PKT., 5c; 1-16 OZ., 15c.

NOVELTY FROM JAPAN

LILIUM TENUIFOLIUM (Coral Lily). Perfectly hardy and one of the first to flower. 24 inches high. Blooms are deep scarlet and have recurved petals of waxy texture. Wonderful cut flower and splendid for the rock garden. Sow in the open where the soil is mellow or in mixture of part sand, leafmold and humus. Most of seedlings will bloom the second year. Some the first year. PKT., 20c; 2 for 35c; oz., \$2.00.



DIMORPHOTHECA—African Daisy

Most of us know the African Daisies and have admired their bright blossoms which are among the earliest to come in the spring. In a border or massed bed they are delightful, but for a really gorgeous display of colors in contrast, plant them with bedding Petunias. The showiest effect is obtained by using mixed colors of African Daisies, and the dark shades with bedding mixture of Petunias, sowing the seed broadcast or setting out the plants informally, giving the appearance of being broadcast. The effect is startlingly beautiful. Pkt. 10c.

Everlasting or Straw Flowers

Grow these for winter bouquets and for garden decoration. They will bloom freely all summer with hardly any care and can be cut and dried for winter. We have some new and better varieties this year.

Everlasting flowers, when wanted for winter bouquets, should be picked before fully open, and hung head downward to dry. PKT., 5c; ANY 3 PKTS., 12c; $\frac{1}{8}$ OZ., 15c.

ACROLINIUM ROSEUM. One of the most beautiful Everlastings. Flowers are double, a delicate rose pink with golden center. PKT., 75 SEEDS.

GLOBE AMARANTH. The plants bear great quantities of clover-like blossoms. Attractive in bud and flower. Mixed. PKT., 75 SEEDS.

HELICHRYSUM MONSTROSUM. Straw flower. The blossoms are large and extra double in many shades of yellow and scarlet, about as showy as Asters. Mixed. PKT., 150 SEEDS.

RHODANTHE. Flowers are deep blood red, rose and yellow shades, with dark eyes. Mixed. PKT., 125 SEEDS.

STATICE LATIFOLIA, or Sea Lavender. Large clusters of delicate pale lavender flowers, splendid for garnishing a bouquet.

STOCKS

MAMMOTH EARLY BRANCHING NICE

This improved variety is now quite generally recognized as the most valuable of all stocks for cutting purposes and the most popular for general use. If sown early they come into flower as early as dwarf 10 week varieties; the flowers are larger and the branching habit renders them invaluable. We list below the choicest of the varieties, at 10c per packet:

Lilac

Belle of Naples, old rose

All colors mixed

Crimson King, brilliant crimson

Almond Blossom, white tinted carmine

Light Blue

DWARF EARLY STOCKS MIXED. Large flowering, brilliant shades and among the earliest to bloom. PKT., 75 SEEDS.

DRESDEN PERPETUAL (Cut, and Come Again). Rose. Best for cutting.

PKT., 5c; 1-16 OZ., 35c

I have never found any stocks like your dwarf early.

Mrs. Jennie Clements, Monroe, Maine.

ASPARAGUS

ASPARAGUS SPRENGERII. Very desirable for hanging baskets or other decorations. Long feathery sprays. Excellent for bouquets. PKT., 10c; 100 SEEDS, 45c.

ASPARAGUS PLUMOSUS. Very graceful and delicate. Will succeed anywhere. Good house plant. PKT., 10c; 100 SEEDS, 90c.

CYCLAMEN

Charming window plants, with ornamental foliage and richly colored orchid-like flowers in pink, white and crimson shades. They are easy to raise from seed, scarcely a seed failing to germinate.

CYCLAMEN GIGANTEUM. A splendid large-flowering strain, mixed in all the Cyclamen colors. PKT., 12 SEEDS, 20c; 100 SEEDS, \$1.00.

FOR YOUR HOME

Grow These Pot Plants!

CINERARIA

Beautiful greenhouse plant, easily grown from seed and excellent for a house plant. Our mixture is made from two extra choice exhibition strains and come in brilliant shades of crimson, violet, purple and variegated. PKT., 15c; 1,000 SEEDS, \$1.25.

COLEUS

Our assortment includes the handsome crinkled and highly colored varieties in best combination of colors. PKT., 10c.

PRIMULA

MALACOIDES. The Baby Primrose, with a profusion of lavender or white flowers, blooming in 4 or 5 months. PKT., 15c.

OBCONICA. Ever-blooming variety. Lilac tinted. PKT., 10c.

PRIMROSE. Hardy Primrose Mixed. A choice mixture, hardy except in extreme North. PKT., 10c.

FRINGED GIANTS MIXED. Splendid mixture of new fringed varieties. PKT., 10c.

GLOXINIA

Popular greenhouse and conservatory plants with gorgeous bell shaped flowers and ornamental foliage. Many brilliant shades are found in this mixture of better varieties. MIXED, PKT., 15c; 1,000 SEEDS, \$1.50.

GERANIUM

NEW CALIFORNIA GERANIUM. This mixture contains a splendid strain and new and interesting varieties can often be obtained in growing Geraniums from seeds. PKT., 10c.

CALCEOLARIA

GRANDIFLORA. Gorgeous plant for greenhouse or window. Orchid-like blossoms. Bloom 8 months after sowing, bearing many curious flowers, spotted and blotched in a most unique manner. PKT., 15c.

General List—Flower Seeds

On the next few pages you will find my general list of flower seeds, including all the old garden favorites. If there are any of your favorites which you do not find here please look in the front part of the catalogue or in the perennial section on pages 35-36. My new novelties are in the first few pages.

ABRONIA

Rosy-lilac, good for rock work or hanging basket. PKT., 6c.

ABUTILON

Flowering maple. New hybrids; often give new kinds. PKT., 10c.

AGERATUM

Blue perfection. Dwarf blue. PKT., 8c.

ALYSSUM

Sweet White. For cutting. PKT., 6c.
Lilac Queen. Dwarf lilac. PKT., 6c.
Carpet of Snow. See p. 19.

AMARANTHUS

Splendid for tall effects. PKT., 6c.

ASPERULA AZUREA

Bright blue. Sweet scent. PKT., 6c.

BALSAM

Double prize mixed. Very fine. PKT., 6c.

BALLOON VINE

(Love-in-a-puff). White. PKT. 8c.

BARTONIA

Aurea. Gold yellow. Sweet scent. PKT., 8c.

CARNATION

Special mixed. PKT., 5c. See also p. 5.

CENTAUREA IMPERIALIS

Sweet Sultan. PKT., 8c.

CASTOR BEAN

Mixed. Highly ornamental. PKT., 5c.

CELOSIA

Cockscomb special mixed. PKT. 5c.

CHRYSANTHEMUM

Fancy Japanese, mixed. PKT. 5c.

CALLIOPSIS

Dwarf mixed. Fine for edging. PKT. 5c.
Tall mixed. Single and double. PKT. 5c.

CANNAS

Prize mixture. Red & green leaved. PKT., 6c.

CANDYTUFT

Rose cardinal. Crimson. PKT., 6c.
Giant hyacinth. White. PKT., 10c.
Special mixture. PKT., 5c.
Hardy perennial—see page 31.

COREOPSIS

Perennial. Yellow PKT., 10c

DATURA

Sweet Trumpet Flower. Immense funnel-shaped blossoms in white, lilac and yellow. PKT., 5c.

DAHLIA DOUBLE

Raise Dahlias from seed. Many new varieties are obtained. PKT., 8c.

DAISY

Bellis Perennis or English Daisy. Very dainty. Blooms first year. PKT., 5c.

Longfellow Daisy. Dainty rose blossoms, crimson tipped. PKT., 6c.

Snowball. Large double white. PKT., 5c.

Marguerite. Golden yellow. PKT., 5c.

Swan River. Feathery foliage and pretty star-like flowers. PKT., 5c.

DRACAENA

Very effective in boxes and beds. PKT., 10c

DUSTY MILLER

Valuable foliage plant. PKT., 8c.

ESCHSCHOLTZIA

California Poppy.

Ramona. Coppery gold, pink shadings. PKT., 10c.

Double Orange. Good for cutting. PKT., 10c.

Mixed. Best kinds mixed. PKT., 5c.

EUPHORBIA

Snow on the mountain. PKT., 6c.

FEVERFEW

Snowball. Pure white. PKT., 6c.

Golden Ball. Yellow. Very effective, PKT., 6c.

FLAX

Scarlet or Pink. Very fine. PKT., 5c.

FOUR O'CLOCK

Marvel of Peru. Have the children plant some of these. Bright colors and sweet odor. 2-3 ft. PKT., 5c.

GILIA

Lavender and white. Dark throat. PKT., 5c.

GODETIA

Satin flower. Fine for shade. PKT., 6c.

GOURDS

To cover unsightly corners, etc. PKT., 5c.

GREVILLEA

Fern-like, highly ornamental. PKT., 8c.

GYPSOPHILIA

Baby's Breath. For bouquets. PKT., 5c.

GRASSES, ORNAMENTAL

Very useful in border. PKT., 5c.

HUNNEMANIA

Bush poppy. Blooms until frost. PKT., 6c.

HONESTY

(Moonwort) Silver pods are good for decoration. Pleasing in garden. PKT., 6c.

HELIOTROPE

Attractive shades mixed. PKT., 8c.

HIT OR MISS

Excellent mixture of seeds left over from last year. Most of these will germinate and give a gorgeous display of bloom. LARGE PKT., 5c; OZ., 10c.

ICE PLANT

A curious trailing plant. PKT., 8c.

KOCHIA

Mexican fireplant. Decorative. PKT., 5c.

LANTANA

Fine for beds and borders. PKT., 8c.

LAVATERA

Improved annual mallow. PKT., 5c.

LINARIA

Very pretty. Resembles snapdragon. PKT. 10c.

LOBELIA

Effective for edging, porch box, etc., PKT. 8c.

LUPINS

Valuable where tall effects are desired. PKT., 6c.

MARIGOLD

African Orange Ball. Golden orange, PKT., 5c.

African Lemon Ball. Soft lemon yellow. PKT., 5c.

Legion of Honor. Dwarf golden yellow. PKT., 5c.

MIGNONETTE

Fragrant and fine for cutting. Mixed. PKT., 5c.

MOONFLOWER

Improved Early Giant White. PKT., 8c.

Improved Early Giant Pink. PKT., 8c.

NASTURTIUM

DWARF VARIETIES: PKT., 5c.

Spotted King—Yellow, spotted red.

Aurora—Terra Cotta.

Empress of India—Dark scarlet.

Crystal Palace—Sulphur, spotted red.

Pearl—Light cream.

Golden Queen—Golden yellow.

King Theodore—Velvety maroon.

Vesuvius—Salmon pink.

SPECIAL DWARF MIXTURE. As rich and varied assortment as any mixture ever offered. PKT., 5c; ½ OZ., 10c; OZ., 15c; ¼ LB., 45c.

TALL VARIETIES: PKT., 5c.

Giant of Battle—Yellow, blotched red.

Jupiter—Best golden yellow.

King of Blacks—Dark maroon.

Moonlight—Light cream yellow.

Fimbriata—Fringed varieties.

Twilight—Rose or salmon rose.

SPECIAL TALL MIXTURE, including the varieties above listed and many others. Unexcelled. PKT., 5c; ½ OZ., 10c; OZ., 15c; ¼ LB., 45c.

NICOTIANA

Affinis. Sweet scented tobacco plant. PKT., 5c. Mixed. Best popular kind. PKT., 5c.

NOLANA

Little Bells. Trailing plant. PKT., 5c.

NIGELLA

"Love in a mist" or "Ragged Lady." Blue Violet. PKT., 5c.

OENOTHERA

Evening primrose. Good for sunny places in the rockery or border. Yellow and white flowers mixed. PKT., 6c.

ORNAMENTAL PEPPERS

Small fruited peppers. Ornamental and useful for seasoning. Mixture of best kinds. PKT., 5c.

PENSTEMON

Perennial. Beautiful Blue. PKT., 10c.

PERILLA

A coleus like decorative plant. PKT., 5c.

PINKS

Fireball. Dark blood red. New.

Snowdrift. Large double white.

Eastern Queen. Marbled, Rose-white.

Double Diadem. Large fringed.

Giant Heddiwigi. Single mixed.

Scotch or Grass Pinks. Perpetual bloomer.

Exquisite colors with velvet red eye. Clover-like odor. PKT., 12c.

Special Mixture. Best kinds including above, except Scotch.

EACH OF THE ABOVE PINKS, PKT., 5c

EXCEPT SCOTCH

POLYANTHA

Also called Baby Rose or Little Midget. Clusters of rose-like flowers. PKT., 8c.

SANVITALIA

A gem for rock gardens. Double yellow. PKT., 15c.

SALPIGLOSSIS

Petals beautifully penciled. Wide range of colors. 1 to 2 feet. PKT., 5c.

SENSITIVE PLANT

Closes its leaves at the slightest touch. Very interesting for children. PKT., 5c.

SMILAX

Valuable decorative climber. PKT., 5c.

STOKESIA

Cornflower. Aster. Many colors. PKT., 5c.

SUNFLOWERS

Chrysanthemum flowered. Magnificent flowers. Double. PKT., 5c.

Special Mixed. All colors. PKT., 5c.

New Red Sunflowers. Very unique. Many shades of red. PKT., 10c.

New Rainbow Sunflower. Obtained by blending three distinct types. All colors. PKT., 8c.

Maroon Prince. See page 18.

TAGETES

Miniature Marigolds. PKT., 5c.

TRITOMA

Red hot poker plants. Scarlet spikes rivaling the Canna in brilliance. PKT., 8c.

VINCA VINE

Good for window boxes. PKT., 5c.

I want to tell you how good my seed came up especially the Salvia and Asters—seemed every seed came up. I always have good results with your seed.

Mrs. M. E. Abbey, Battle Creek, Mich.

R. 5, Box 265.

Scabiosa (Mourning Bride)



Scabiosa

An easily grown and showy annual which develops to perfection in a sunny situation. Within recent years these Scabiosas have been greatly improved in size and blooming habit.

Our own special mixture of named varieties, the very best I can offer. Valuable for cutting and for exhibition purposes. 2½ feet.

PKT., 60 SEEDS, 5c; ¼ OZ., 15c.

SEPARATE COLORS: LILAC, ROSE, SCARLET, PURPLE, YELLOW, WHITE, AZURE FAIRY, FLESH AND MIXED.

COLLECTION NO. 111. 8 FULL PACKETS, 30c

ANNUAL LARKSPURS

LA FRANCE. Without question, the culmination of beauty in the stock-flowered larkspurs. A pleasing salmon-pink of vigorous growth. Large, well-formed double flowers, well placed on long stems presents a beautiful appearance which has won it instant recognition from the most severe critic. Your garden will not be complete without this striking annual. PKT., 15c.

DOUBLE STOCK FLOWERED TALL "EXQUISITE." The color of this charming new Larkspur is a beautiful soft pink and will be highly prized by seedsmen who cater to the florists' trade. PKT., 15c; ¼ OZ., 65c; OZ., \$2.40.

IMPERIAL MIXED. Choice improved strain made up from special varieties. Height, 2 feet. PKT., 5c; ¼ OZ., 15c.

CARMINE KING. This is the first of the DEEP CARMINE ROSE shades in the new upright type of Larkspurs. It comes fully true to type and color which we consider most extraordinary in pink larkspurs and it is just the right tone of carmine to make it very showy. The flowers are a great improvement over the older types in size and color. I received many favorable comments on this in my trial gardens. PKT., 15c.

"NEW DEAL" PRICE—FOUR PACKETS, 25c (With \$1.00 order). Not more than eight packets to a customer at this price.

IMPROVED BACHELOR BUTTON

(CENTAUREA CYANUS)

The Bachelor Button is one of the most popular annual summer flowers. It is easily grown from seed and it usually reseeds itself year after year. You must try these because the flowers are large and double; a great improvement over the old-fashioned variety.

DOUBLE MINIATA—brick red; DOUBLE ALBA—white; DOUBLE BLUE; DOUBLE PINK.

PER PKT., 10c; PKT. EACH OF FOUR VARIETIES, 29c.

HELIANTHUS (Sunflower) MAROON PRINCE

A most beautiful and unique sunflower and unquestionably the finest Red Sunflower on the market today. Dwarf growing and true maroon in color. You will be more than pleased with Maroon Prince Sunflower. Generous Packet, 15c; oz., \$1.00.

Phlox—Drummondii Improved

Two new colors of this old garden favorite. Will bloom profusely and uniformly. Makes one of the most satisfactory of all summer flowering annuals.

PRIMROSE—PER PACKET, 15c; 2 PACKETS FOR 25c.

VIOLET—PER PACKET, 15c; 2 FOR 25c.

PHLOX, SALMON PINK

Very effective in a mass by itself, or with white. PKT., 5c.

PHLOX—SPECIAL MIXED

All New and Old Varieties in Fine Mixture. Pkt., 5c; $\frac{1}{8}$ oz., 40c.



Double Poppies

PHLOX, SCARLET

Almost as handsome for bedding as Geraniums. PKT., 5c.

PHLOX, WHITE PERFECTION

Pretty for the cemetery or design work. 5c.

PHLOX

STAR. A very pretty annual phlox with blossoms resembling a many pointed star and with an array of colors that make it a very dainty flower for any garden. PKT., 10c; $\frac{1}{8}$ OZ., 30c.

DWARF PHLOX

The plants grow quite compact, the blossoms forming a floral crown for each little plant which will last for weeks. Splendid for edging and ribbon bedding. PKT., 100 SEEDS, 6c; $\frac{1}{8}$ OZ., 45c.

DWARF PHLOX, RED. Blood red.

DWARF PHLOX, WHITE. Pure white.

MIXED. PKT., 5c; $\frac{1}{8}$ OZ., 40c.

POPPY

DOUBLE VARIETIES. PKT., 500 SEEDS, 5c;

ANY THREE PKTS., 12c; $\frac{1}{8}$ OZ., 15c.

DOUBLE SCARLET. Brilliant red.

WHITE SWAN. Pure, white, fringed edges.

DOUBLE MIXED. Splendid mixture of strains of Peony-flowered, Carnation-flowered, and almost every variety of double poppy grown.

SINGLE POPPY. Splendid mixture, including the best sorts. PKT., 5c; $\frac{1}{8}$ OZ., 10c.

SHIRLEY POPPY. Often called Silk or Ghost Poppy because of the sheeny lustre of the rich colors. No better mixture of poppies than these. PKT., 5c; 1-18 oz., 15c.

AMERICAN LEGION. A dazzling orange scarlet borne on long stout stems, single type. PKT., 10c; $\frac{1}{4}$ OZ., 60c.

SPECIAL MIXED. Single and Double varieties. PKT., 4c; 1-18 OZ., 10c.

COLLECTION OF POPPIES. One full packet of 5 different mixed kinds. Includes the single, double Shirley, Iceland and Oriental kinds. 5 PKTS., 20c.

See Oriental Poppy—Page 36

“HIT OR MISS”—A pleasing collection of seeds left over from last year. Most of them will germinate. LARGE PKT., 5c; OZ., 10c.

ICELAND POPPY EL MONTE. This is a DEEP TANGERINE ORANGE with flowers twice the ordinary size of Iceland Poppies. It comes true to color, is extremely easy to grow and can be produced in six months from seed. This variety has never before been offered in this country, being a selection from some giant hybrids sent to us by an Australian plant breeder. This will add greatly to the novelty of your new year's garden. PACKET 15c

NOVELTIES FROM INDIA

AQUILEGIA VULGARIS. The charming wild columbine from the hillsides of Kashmir, India, untouched by the hybridist, with large open flowers in white, blue and pink shades. Very fine. PKT., 20c.

PRIMULA NIVALIS. A magnificent and rare species. The plant sends up a stout spike, bearing many whorls of blue-purple flowers with a dark center. PKT., 20c.

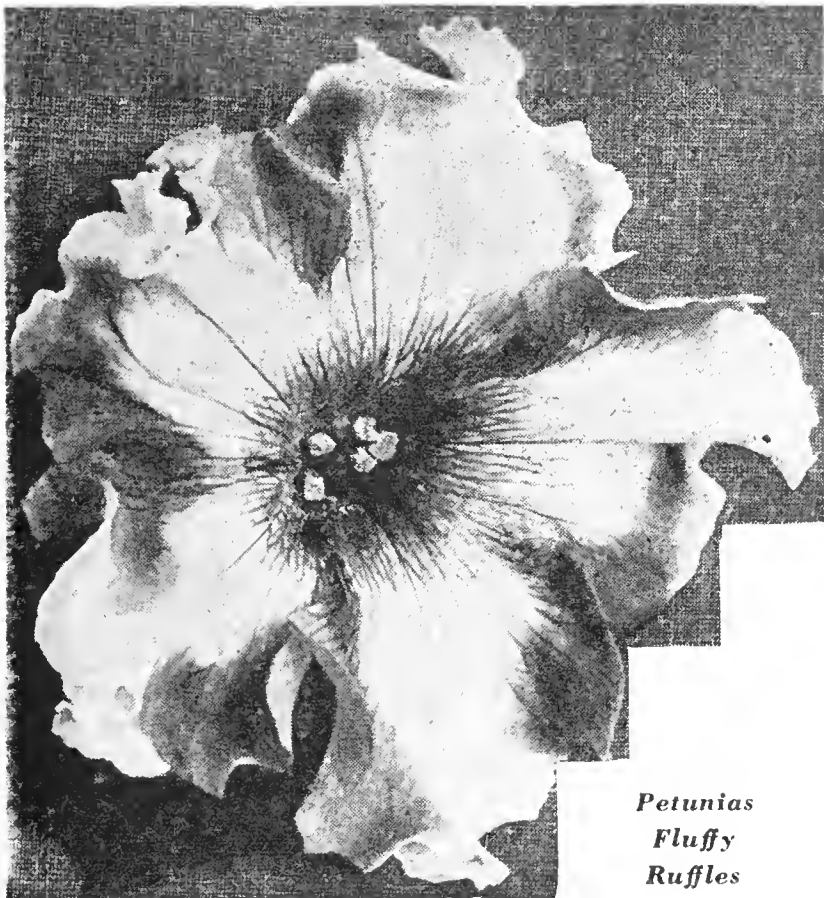
Giant Petunias

NEW DWARF CALIFORNIA GIANTS

Introduced as a novelty in 1929, this variety has proved itself the best strain of giant petunias for pot culture. Also very good for window boxes. We do not hesitate in recommending it and in saying that it is the most compact giant petunia with the largest and best formed flowers of any variety in existence. It is an exceptional strain. **PACKET 25c.**

FLUFFY RUFFLES

A superb strain of single petunias, the most deeply ruffled and fluted of all. Exceedingly delicate and graceful. Mixed. **100 SEEDS 20c; 500 SEEDS, 80c.**



*Petunias
Fluffy
Ruffles*

Double Large Flowering Choice Fringed Mixed

These new Double Fringed Petunias have never been surpassed in beauty, size, form or color, and much selection in crossing these flowers make this magnificent strain possible. A good percentage come true, and each flower is fluted, frilled, ruffled and pinked in such a way as to give a sensational effect of beauty and color. Don't cull out the seedlings which seem to grow the slowest and have crumpled foliage. These are the ones which produce the finest flowers. Several seed houses are asking from 35c to 50c per packet, for this high priced seed.

Single Large Flowering Giants of California

This strain bears gigantic flowers often 5 or more inches in diameter. They embrace every conceivable shade of crimson—pink, lavender, yellow, black, pure white, etc. One of the chief points of excellence is the deep throat and diversity of veining in the throat. Many of the flowers have a clear yellow throat while others have a pure velvety black, one so deep that it seems to show no veining; many are deeply lined and netted on a white, pink, or lavender ground. Flowers are beautifully ruffled and frilled. Mixed colors.

Above varieties, per pkt., 25c.
"NEW DEAL" Price—Four pkts., 50c
(if total order amounts to \$1.00).

SPECIAL MIXED

Best Mixture of All Single Types.
Very Fine. Pkt., 10c; 1-16 oz., 30c

PETUNIA "THEODOSIA"

(Translation "Gift of God.") Color a bright pink, limb heavily ruffled and fluted, wide open golden throat delicately penciled with black or brown. Produces a large flower and is an "all purpose" Petunia for bedding, boxes, pots and decorations. Seed which we offer is that of the originator who refers to "Theodosia" as the most beautiful petunia he has ever originated. We can highly recommend it. **PACKET 25c; LARGE TRADE PACKET 50c**

Balcony and Bedding Petunias

ROSY MORN. Splendid for bedding, potting or edging, covered with delicate rose pink flowers. A very popular variety. **PKT., 10c; 1-16 OZ., 25c.**

VIOLACIA. Bedding strain of the Balcony Queen. Plants and blooms smaller. A rich violet purple. **PKT., 10c; 1-16 OZ., 30c.**

BLOTCHED AND STRIPED. Beautifully striped and mottled, and exceptionally fine for baskets, vases and for massing. **PKT., 10c; 1-16 OZ., 25c.**

BALCONY TYPE

BALCONY QUEEN. Large flowering or Grandiflora, rich dark velvety purple, one of the best plants for window boxes or group planting. Use white flowers with the Balcony Queen for best effect in window box. **PKT., 25c; 500 SEEDS, 90c.**



Verbena Hybrid Compacta Erecta Fireball

VERBENA BEAUTY OF OXFORD HYBRIDS

For many years the non-seeding variety, Beauty of Oxford, has been a favorite Verbena. This new strain is the nearest approach in a seeding variety to the bright deep rose pink shade of Beauty of Oxford. The flowers are large and freely produced on plants which hold their shape well at all times. A magnificent flower. Pkt. 15c.

VERBENA HYBRIDA COMPACTA TYPE—(Edging Verbenas) FIREBALL

These are distinct from all other types of Verbena, very compact, dwarf, and free flowering. The color range is very wide, in bright shades. They are excellent for the annual rock garden in a sunny position, for borders or edgings, or for window boxes or pots. Fireball is bright scarlet, a beautiful type. Pkt., 15c. NEW DEAL PRICE—2 Pkts. above varieties 15c (If order totals \$1.00).

VERBENA—MAMMOTH VARIETIES

This glorious new type is bound to become popular because it represents a decided improvement. Their gorgeous colors are brought out by the tremendous flower heads which adorn the plants until frost.

PKT., 100 SEEDS, 5c; ANY 6 PKTS., 25c;
1/8 OZ., 25c

AURICULA-FLOWERED. Large flowers with distinct white eyes in the center of each floret.
PINK. Fine pink shades.

ITALIAN STRIPED. Various colors striped on white ground.

PURPLE. Deep rich purple.

SCARLET DEFIANCE. Beautiful scarlet.

WHITE. Pure white, extra large.

FORDHOOK MAMMOTH MIXED. A splendid mixture with exceptionally large flower trusses, including all our named varieties, also best strains of several prominent growers. As fine as any of the highest-priced mixtures.

AURICULA—FLOWERED SCARLET DEFIANCE
PINK WHITE

ITALIAN STRIPED
PURPLE

LUCIFER—SCARLET
MIXED

Three Unusual Annuals—Try Them!

SCHIZANTHUS

(Butterfly Flower)

It is a quick germinating annual and is soon in bloom after planting. Its flowers are airy and of the lighter shades of pinks, yellows and lavenders. It is good for border work, and in front of tall flowers. Make good pot plants from seed if sown in the fall. PKT., 10c; $\frac{1}{8}$ OZ., 15c.

MIMULUS

(Monkey Flower)

Showy, profuse, flowering plants, with Gloxinia-like blossoms, fine for winter garden, or for moist, shady positions. A mixture of Tigrinus, or true Monkey Flower, and Musk Plant, noted for its fragrant foliage. PKT., 50 SEEDS, 5c; $\frac{1}{8}$ OZ., 24c.

ALYSSUM

(Carpet of Snow)

A new dwarf Alyssum, growing only 2 or 3 inches high, and flowering so profusely as to make a perfect carpet of white throughout the season. Splendid for pots and edgings. PKT., 300 SEEDS, 10c; $\frac{1}{8}$ OZ., 20c.

PORTULACA OR MOSS ROSE

The Portulaca surpasses in brilliancy any other annual in cultivation. Plants are low growing and virtually creep along the ground covering the entire space with a mass of color. They thrive in almost any location and can stand the hottest summer weather. We offer only the improved strains.

Two Garden Favorites

COSMOS

New Mammoth Flowering

Our grower says: "The blossoms, under ordinary field cultivation, average 4 to 5 inches across, surpassing in size any of the late varieties. From seed sown in the open ground, the 'white' blossoms in exactly 60 days, 'pink' in 65 days, 'crimson' in 70 days." PKT., 8c; 3 FOR 20c; $\frac{1}{4}$ OZ., 30c.

LADY LENOX. New varieties of gigantic size and beauty. Mixed. PKT., 5c; $\frac{1}{4}$ OZ., 25c.

LATE MAMMOTH FLOWERING. Regular strain. PKT., 5c; 3 FOR 12c; $\frac{1}{4}$ OZ., 25c.

WHITE, PINK, CRIMSON, MIXED.

CALENDULA

LEMON QUEEN. Beautiful sulphur-yellow New and very fine. PKT., 6c.

BALL'S GOLD. Dark golden yellow. New last year. PKT., 8c.

SPECIAL MIXED. The above and other fine varieties mixed. PKT., 5c.

(See also page 26)

Two Attractive Novelties

DIDISCUS

QUEEN ANNE'S BLUE LACE FLOWER

This dainty and pretty flower has in the past couple of years become very popular and is found in the florists' shops everywhere, but even so it is easily grown and every one can have some. It somewhat resembles the Scabiosa, but is of a very peculiar shade of blue, a shade that is quite the thing these days. It is an annual and blooms profusely from July to November or a heavy frost cuts it down. Its exquisite, lacy-like flowers make it wonderful for cutting. The plants grow to height of about eighteen inches and are literally covered with flowers most of the time. PKT., 10c; $\frac{1}{4}$ OZ., 50c; OZ., \$1.60.

CLARKIA

A pretty desirable annual with racemes of white or varying shades of red. Very popular in European gardens. 1 foot.

DOUBLE, PER PKT., 5c; $\frac{1}{8}$ OZ., 20c

DOUBLE PORTULACA. Mixed. Low trailing annuals, with double flowers like charming little roses. Many brilliant colors. PKT., 200 SEEDS, 10c; 1-16 OZ., 30c.

SINGLE PORTULACA. Mixed. Pretty to mass in a bed or on some sunny slope. PKT., 400 SEEDS, 5c; $\frac{1}{8}$ OZ., 10c.



Cosmos

NEW MARIGOLD—Guinea Gold

A distinct type of graceful habit, growing 2 to 2 $\frac{1}{2}$ feet high, and producing flowers 2 to 2 $\frac{1}{2}$ inches across, of a brilliant orange with double ruffled, loose leaf petals. Valuable as a cut flower for florists' use and is now in great demand. Pkt., 15c.

Special Announcement

The tremendous success of my "New Deal" plan initiated last season has made it possible for me to offer you for 1935, a tremendous saving on Vegetable Seeds. If your order totals \$1.00, you may select your vegetable seeds at the rate of 3 FOR 10c. Think what a saving this means for you—Your Vegetable Seeds at only slightly over 3c per packet. And see the nice selection of varieties on pages 16 to 20.



Dirt-Proof, Washable GARDEN GLOVES

ALL LEATHER
DURABLE
EXTRA SOFT

Easy to Wear

—for Men and Women

Eezy Wear gives you everything you want in a garden glove: all-leather protection from dirt, scratches, stains, infection—yet permit almost BAREHAND FREEDOM. Their amazing softness and pliability are the result of a special processing of select lamb skins. Economical, too—outwear 6 pairs of ordinary fabric gloves, are washable and can be used the year round for gardening, housework, painting, furnace, garage, etc.

Sizes for WOMEN (small, medium, large) and MEN (small, medium, large).
Price, 75 cents a pair, postpaid. (2 pr. \$1.40.)

NATIONAL
Eezy Wear
HOME GLOVES

Helpful Hints!

FLOWERS FOR THE HOUSE—See Page 26.

BEDS AND BORDERS—Alyssum, Ageratum, Phlox, Portulaca, Verbena, Asters, Calendula, Calif. Poppies, Centaurea, Gaillardia, Marigold, Mignonette, Snapdragon, Statice, Strawflowers, Sweet Pea, Zinnia.

FOR EARLY BLOOMING—Ageratum, California Poppies, Larkspur, Pansies, Petunia, Phlox, Poppies, Sweet Alyssum, Sweet Pea.

FOR FALL BLOOMING—Celosia, Cosmos, Asters, Scabiosa, Salvia, Stocks, Verbena.

FOR FRAGRANCE—Abronia, Candytuft, Carnation, Heliotrope, Mignonette, Alyssum, Sweet Peas, Sweet Sultan.

FOR PARTLY SHADY PLACES—Anchusa, Achillea, Asperula, Balsam, Cyclamen, Forget-me-not, Foxglove, Mimulus, Primula, Valeriana, Vinca.

WHITE—Asters, Baby's Breath, Feverfew, Mignonette, Moonflower, Phlox, Poppies, Zinnia.

PINK AND ROSE—Aster, California Poppies, Celosia, Cosmos, Larkspur, Moonflower, Nasturtiums, Petunias, Pinks, Scabiosa, Snapdragon, Stocks, Strawflowers, Sweet Peas, Verbena, Zinnia.

RED SHADES—Asters, California Poppy, Candytuft, Cardinal Climber, Celosia, Cosmos, Chinese Pinks, Mignonette, Nasturtiums, Pansy, Poppies, Phlox, Salvia, Scabiosa, Snapdragon, Scarlet Runner, Sweet Peas, Verbena, Zinnia.

BLUE AND PURPLE—Ageratum, Asters, Blue Lace Flower, Bachelor Buttons, Hyacinth Bean, Forget-me-not, Larkspur, Lobelia, Pansy, Petunia, Scabiosa, Statice, Sweet Peas, Verbena.

YELLOW AND ORANGE—Bartonia, Calendula, California Poppy, Calliopsis, Canary Bird, African Daisy, Feverfew, Gaillardia, Marigold, Nasturtiums, Pansy, Snapdragon, Strawflower, Tagetes, Zinnia.



FERNOLA

The Finest Plant Food for
Ferns and House Plants

Per Pkt., 13c; 2 for 25c Postpaid

PERENNIALS

My mixed basket of Perennials took first prize at our Garden Club flower show last season.

Mrs. S. C. Kerr, Steubenville, Ohio.

FORGET-ME-NOT

MYSOTIS. Most desirable sorts in varying shades of blue, some early, some late. Many will bloom the first year. Height, 6 in. PKT., 10c; 1-16 OZ., 20c.

DIGITALIS

FOXGLOVE. Easily grown from seeds and fine for partially shaded places. Covered with thimble shaped flowers in many beautiful colors. Height, 3 to 5 feet. Splendid mixture. PKT., 10c; 1-16 OZ., 25c.

HOLLYHOCK

Constant experimenting by hybridizations and selections has secured flowers of extreme size and fulness, unsurpassed in beauty and variety of colors. Many are rosette-shaped and all will please the most fastidious. PKT., 10c; ¼ OZ., 75c.

DOUBLE, PINK, RED, MAROON, ROSE, CRIMSON, WHITE AND YELLOW. Separate, each PKT., 40 SEEDS.

SPECIAL DOUBLE MIXED. My special mixture of the above named and other English Prize Hollyhocks, all of the choicest double sorts grown. PKT., 50 SEEDS, 10c; ¼ OZ., 60c.

SINGLE MIXED. PKT., 10c; ¼ OZ., 70c.

CAMPANULA (CANTERBURY BELL)

This important flower deserves a place in every perennial border and are charming in rock gardens. Plants are compact and range as a rule from 18 to 24 inches in height. The Cup and Saucer is a showy strain, the blooms resembling a cup and saucer. A single plant of this variety has been known to produce a hundred blooms. Persicifolia is one of the hardiest of the family and Pyramidalis is the taller growing species. Carpatica is perhaps the best of the family for rock gardens or borders, growing only about eight inches high.

CAMPANULA (Cup and Saucer) Mixed. PACKET 400 SEEDS, 10c; 1-16 OZ., 20c.

CAMPANULA (Old-fashioned Canterbury Bells) PACKET, 10c; 1-16 OZ., 15c

Medium Pink Medium Blue Medium White Medium Mixed

CAMPANULA PERSICIFOLIA. Blue. PKT., 10c; 1-16 OZ., 30c.

CAMPANULA PYRAMIDALIS. Blue and white. PKT., 10c; 1-16 OZ., 30c.

CAMPANULA CARPATICA. Hare-Bell. Clear Blue. PKT., 10c; OZ., 30c.

SHASTA DAISY—ALASKA

This improved strain of Burbanks Shasta Daisy is produced from the finest strains in existence, which means that the flowers are very large with long petals and small centers. During July and August the plants are covered with big white yellow centered daisies. They make a fine display, even in poor soils, blooming throughout the summer, Grows 2 to 3 feet tall. PKT., 10c.

AQUILEGIA (Columbine)

Popular hardy perennials producing graceful spurred flowers on stems 2 feet or more above the beautiful dark green foliage. Easily grown from the seed. PKT., 10c; 1-16 OZ., 40c.

CHRYSANTHA. Long spurred golden yellow.

CHRYSANTHA ALBA. Large pure white.

COERULIA, HYBRIDS (Rocky Mountain Columbine). Blue and pink mixed with yellow.

JAETSCHAUI. Yellow with red tip.

SKINNERI. Large scarlet, extra fine.

COLLECTION. One full packet each of five colors, 40c.

LONG SPURRED COLUMBINES. Mixed splendid large flowering, long spurred varieties. If not allowed to seed these sorts will bloom through a good part of the summer. PKT., 10c; ¼ OZ., 40c.

ARMERIA

FORMOSA. The Cliff Rose. Thrives in crevices and crannies of rock. Resembles a deep green moss and keeps green all through the winter. PKT., 10c; ¼ OZ., 25c.

DIANTHUS

HARDY GARDEN PINKS. Charming summer flowering border plants more or less fragrant; should be planted in every garden. PKT., 10c; ⅛ OZ., 25c.

PLUMARIUS (Scotch Pinks, Pheasant's Eye, Grass Pinks). Pretty fringed, single flowers of various colors. PKT., 10c; ⅛ OZ., 25c.

SWEET WILLIAM (Dianthus Barbatus). A well-known, free-flowering, hardy perennial, producing a splendid effect in beds, mixed flower and shrubby borders. 2 feet. PKT., 10c; ⅛ OZ., 25c.

PHLOX

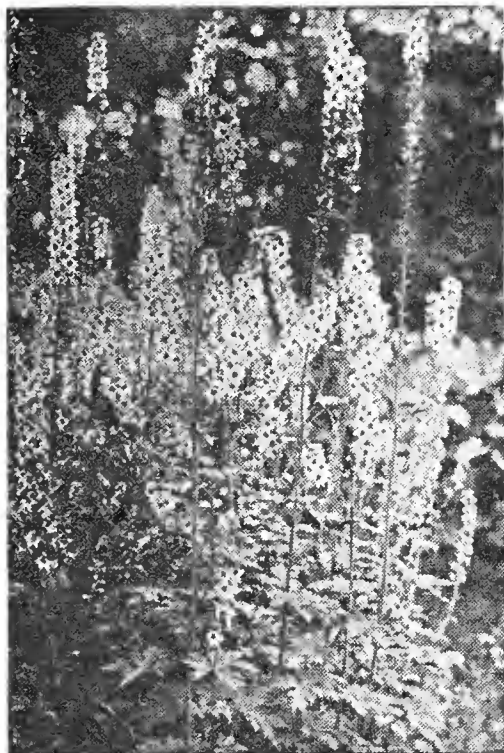
HYBRIDA. These seeds are from named varieties. The plants attaining a height of about four feet and in many colors. PKT., 10c; ⅛ OZ., 25c.

GAILLARDIA

THE BLANKET FLOWER. Resembling a daisy but of very large size and very showy. Excellent for cutting and very easily grown. Deserves a place in every garden. PKT., 10c; ⅛ OZ., 15c.

Delphinium (Perennial Larkspur)

Few plants are so handsome in the garden as the perennial larkspurs. The most important species in cultivation are the tall hybrids of which there are many varieties with a wonderful range of color, varying from the palest lavender through every shade of blue to deep indigo. They thrive in almost any situation and are easily increased, being perfectly hardy. All varieties, Pkt. 10c, 1-16 oz., 40c.



Delphinium

DELPHINIUM BELLAMOSUM. The best variety of the dark blue delphiniums, with intensely rich coloring.

BELLADONNA. Exquisite shade of light blue, thickly set on long and sturdy spikes. Very pretty.

GOLD MEDAL HYBRIDS. An excellent range of all the characteristic colors. Seeds saved from selected plants.

HOLLYHOCK STRAIN. This striking type introduced by us as a novelty in 1929 is the result of several years of painstaking reselection and is a fine mixture of all light shades, pale clear blue predominating. Flowers are large, truly double and well placed on long spikes reminding one of a hollyhock.

DELPHINIUM CARDINALE (Red Perennial Larkspur). An unusual Delphinium growing 3 feet high. The orchid-like flowers are a brilliant scarlet in color. One of the most brilliant and effective varieties. PER PKT., 10c.

IMPROVED ORIENTAL POPPY

For gorgeous coloring and display the Orientale poppies have few rivals among hardy plants. A magnificent effect is produced by planting shrub-beries and perennial borders. By cutting the flowers while they are in bud they last well as cut flowers.

ORIENTALE. This is the most showy of all perennial poppies. Immense scarlet red flowers borne profusely during late May and June. Plants grow 2 to 3 feet tall and flower very freely. PKT., 10c; 1/8 OZ., 30c.

ACHILLEA

THE PEARL. Popular perennial of pure white double flowers. Good for floral pieces or bouquets and for cemetery planting. Height, 1 1/2 feet. PKT., 10c; 1-16 OZ., 25c.

HARDY CANDYTUFT

GIBRALTARICA. Large showy flowers; lilac shading to white. 1 to 2 feet; blooms April and May. PKT., 10c; 1-16 OZ., 60c.

ACONITUM (Monkshood)—Porcelain blue, hood-shaped flowers, 2 feet.

ADONIS. Early flowering. Covered with large yellow blossoms.

AGROSTEMMA. Rose of Heaven. Flowers are light rose shaded white.

ANEMONE. Coronaria. Hardy plants, fine for permanent borders. Height 10 inches.

ANTHEMIS. Golden Marguerite. Golden yellow daisy-like flowers. Very hardy.

ARABIS. Early flowering and hardy. Snowy white blossoms. Called rock-cress.

ASTERS, PERENNIAL. Colors purple and white and are very attractive.

AUBRETIA, HYBRIDA. Large flowers. White, red and blue shades mixed.

BOLTONIA. Resembles Perennial Aster. Pink and white mixed.

BOCCONIA. Plume Poppy. Creamy white blooms.

CERASTIUM or Grasswort. Creeping perennial, gray leaves with white flowers.

FLAX. Perennial varieties mixed. Blue and white and very charming.

GYPSOPHILIA. Baby's Breath. Extensively used for decorating. 1 1/2 feet.

HIBISCUS. Marshmallow Marvels. Large profuse blooms—pink, red, white.

LYCHNIS. Chalcidonica. Scarlet perennial of easy culture. Blooms first year.

LUPINS. Reaches height of two feet with beautiful flower spikes.

LATHYRUS. Perennial sweet pea. Succeed in most any soil. All colors.

MALVA. Muskmallows. Sweet scented flowers of a rose and white shade.

PLATYCODON. Japanese bell flower. Low growing and can be used for borders.

RUDBECKIA. The purple cone flower. Blooms all summer in the form of daisies.

SALVIA. Mixture of Farinacea and Argentea. Lavender blue and whitish flower.

STATICE. Sea Lavender. Used for bouquets, similar to Baby's breath.

SWEET ROCKET. Hesperis. Panicles of white and lilac colored flowers mixed.

SWEET WILLIAM. Very showy with wide color range. Good for border work.

VALERIANA. Large flowers, bright red and of spicy fragrance. Two feet.

PRICES ON ALL OF THE ABOVE ARE 10c PER PACKET.

Emma V. White's

Exhibition Gladioli

(Cultural Directions with Each Order)

WINGED VICTORY (90 days). Eosine pink—self color markings. One of the largest glads. Large pointed wing petals. We had seven-inch blooms in October. Large bulbs, 1—25c; 3—60c; 12—\$2.00.

LA PALOMA (88 days). Brilliant orange, rich and different. Large flowers on a very good tall spike. Large bulbs, 1—12c; 3—30c; 12—\$1.00.

LOYALTY (94 days). Very fine yellow, good sized spike and good grower. Large bulbs, 1—12c; 3—30c; 12—80c.

DR. MOODY (96 days). Light lavender with very fine penciling of darker shade. A close runner-up to Minuet and Berty Snow at shows. Won in basket work for us at 1934 shows. Each, 12c; 3—30c; 12—80c.

MARY FREY (82 days). Lavender with a ruby throat. A wonder glad. One of the earliest lavenders. Each, 10c; 3—25c; 12 for 75c.

MARMORA (96 days). Smoky gray lavender with purple blotch. A fine show flower in the smoky class. Each, 10c; 3—25c; 12 for 75c.

EARLY SUNRISE (85 days). Largest early salmon red. A good ent flower. We never have enough. Each, 8c; 3 for 20c.

BERTY SHOW (82 days). Pink lavender—sometimes considered the best lavender. Extra wide open blooms, fine exhibition variety. Each, 8c; 3 for 20c.

BETTY NUTHALL (111 days). Light apricot with pink tinge, soft salmon throat. Six to eight nicely arranged florets open on a tall straight spike. Exhibition type. Each, 8c; 3 for 20c.

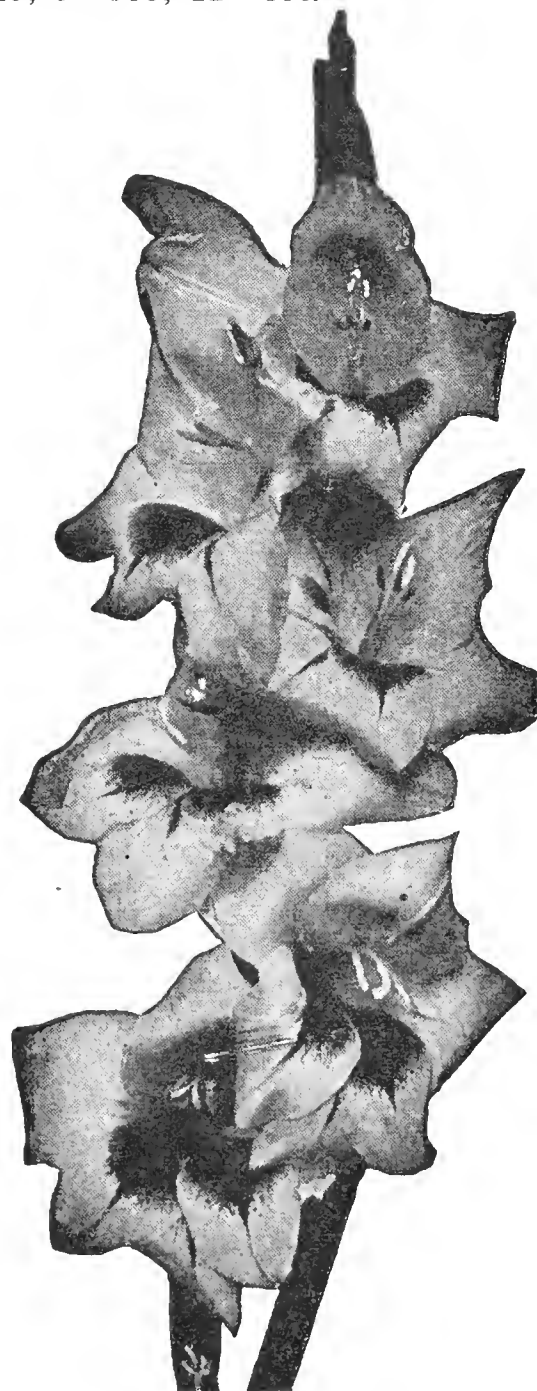
NANCY HANKS (95 days). Apricot orange with rose pencil on yellow throat. Straight spike. Winner in its class. Resists heat. Each, 8c; 3 for 20c.

ORANGE QUEEN (80 days). Apricot orange with red pencil. Each, 8c; 3 for 20c.

ROMANCE (77 days). Smoky salmon red—yellow throat; blue edged. Novelty. Each, 8c; 3 for 20c.

BAGDAD (90 days). Smoky old rose blending to a lighter throat, faint blotches of cream with penciling. Tall strong spike. Exhibition prize-winner. Large bulbs, 1—15c; 3—35c.

DR. SHOOK (91 days). Deep tyrian rose—heavily ruffled. Strong spikes. Best in its color. Placement always good. Large bulbs, each, 12c; 3—30c; 12—80c.



SPECIAL OFFER—One each of varieties described on this page . . . \$1.00

This collection of 14 of the newer and finer sorts will make the most gorgeous display you have ever seen.

Gladioli, Dahlias, Cannas, Lilies

There are many kinds of Gladioli and all kinds of prices. Often you will find offers of 25 Glads for 25c. In most instances, such bulbs are either little tiny things that will have to be grown on by you for at least one season before you will have any bulbs worth while from which to grow real flowers, or else if they are large bulbs, they are from greenhouse benches, where the life of the bulb has been entirely exhausted by forcing. The bulbs which we offer are grown for the most discriminating fanciers, are blooming sizes which will bloom for you this year, and are prizewinning varieties. Happily enough, we are able to offer these at almost as low a price as the cheap bulbs.

ALBANIA. Fine pure white.
 BREAK O'DAY. LaFrance. Pink, pencil on yellow. Very fine.
 E. J. SHAYLOR. Ruffled Rose-pink.
 FLAMING SWORD. Bright red.
 GIANT NYMPH. Very large pink.
 JOE COLEMAN. Ruffled dark red rose.
 LOS ANGELES. Orange salmon.

MAIDEN'S BLUSH. Light pink.
 MYRA. Salmon pink. Tall.
 SOUVENIR. Early deep yellow.
 HAND MIXED. From above and other good named varieties.
 Price above kinds, each 6c, 3 for 15c; 6 for 25c; 12 for 40c; 100 for \$2.50.

THE FOUR LEADING CUT FLOWER DAHLIAS

At prices you can afford to pay.

JERSEY'S BEAUTY. A grand color—large erosine pink. Has surpassed all recent introductions in awards all over the country. Ea. 26c
 MRS. I. DE VER WARNER. Beautiful soft orchid or rich rosy mauve. A prolific bloomer. Exhibition type. Each 26c.
 JANE COWL. Has been a success wherever grown. Cut flowers command high prices. Buff and old gold, blending to apricot and rose at center. Ea. 26c.
 SAGAMORE. Its color, a golden yellow suffused with orange, makes it valuable for early fall decorations. Ea. 26c.
 RED PINK. Autumn shades, mixed.
 Ea. 18c; 2 for 30c; 6 for 59c.

GLORIOUS CANNAS

THE PRESIDENT. The finest red canna. Enormous flowers, green foliage. A mass of glowing scarlet. Ea. 12c.
 YELLOW KING HUMBERT. The best yellow. Green foliage. Flowers golden yellow, spotted red. Height 4 ft. Ea. 12c.
 KING HUMBERT. The most popular of all. Bronze leaved variety with orange scarlet flowers. Ea. 12c.
 SPECIAL OFFER: One each of these three finest cannas, 29c.

REGAL OR ROYAL LILY (Lillium Regal or Myriophyllum)

Regal Lily, being a native of Northwestern China, is hardy. "One of the most beautiful of all known lilies, the exquisite blending of tints and colors forming a charming contrast with the rich, deep-green foliage." Highly recommended for general culture, both for the open ground and for pots.

The outside of the flower is white, very faintly tinged with yellow at the base of trumpet and with pink at the point. The midribs are purple. Inside shows a bright canary-yellow deep in the throat, shading to pure white with just a hint of pink showing through from the outside. Mature bulbs produce plants 3 to 4 feet high, bearing 1 to 7 flowers. Each, 26c.

TUBEROSES

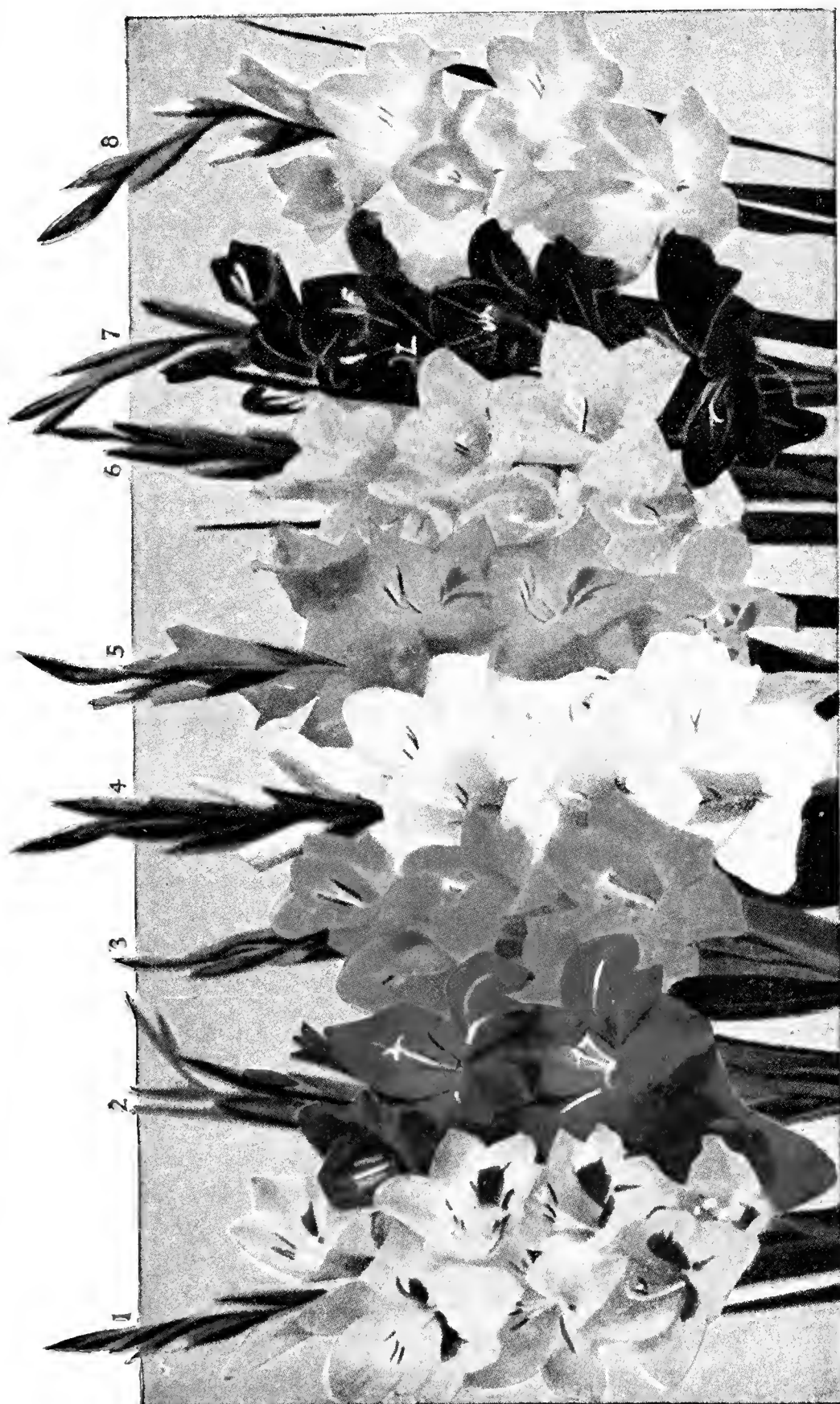
WHITE PEARL. The Tuberose is one of our finest Summer-flowering bulbs. The flowers are waxy-white, double and exceedingly fragrant. A single flower will perfume a room. They do best in a rich warm soil and a sunny situation. Plant about the 1st of May in the open ground, but the bulbs may be started in pots much earlier. Each, 10c; doz., \$1.00.

CALADIUM

ELEPHANT'S EAR. Very effective. If planted in rich soil and watered in dry season, will develop large green leaves. Large bulbs, ea. 28c; 3 for 80c. Mammoth bulbs, ea. 40c; 3 for \$1.14.

SPECIAL OFFER—GOOD UNTIL APRIL 1, 1935

To those of you who order before April 1, 1935, we will send one bulb each of all varieties described on this page—14 Named Gladioli, 4 Leading Dahlias, 3 Glorious Cannas, One each Chinese Regal Lily, Tuberose, Caladium—Entire Collection only.....\$2.00



EMMA V. WHITE'S RAINBOW COLLECTION GLADIOLI

Eight Grand Varieties. Blooming Size Bulbs

- One each of varieties pictured, Eight bulbs . . . 48c
- Two each of varieties pictured, Sixteen bulbs . . . 80c
- Three each of varieties pictured, Twenty-four bulbs 96c

100 Bulbs, assorted from varieties pictured, \$2.65

Emma V. White's Superb Sweet Pea Garden

FLUFFY RUFFLES. Lovely rich rose pink.

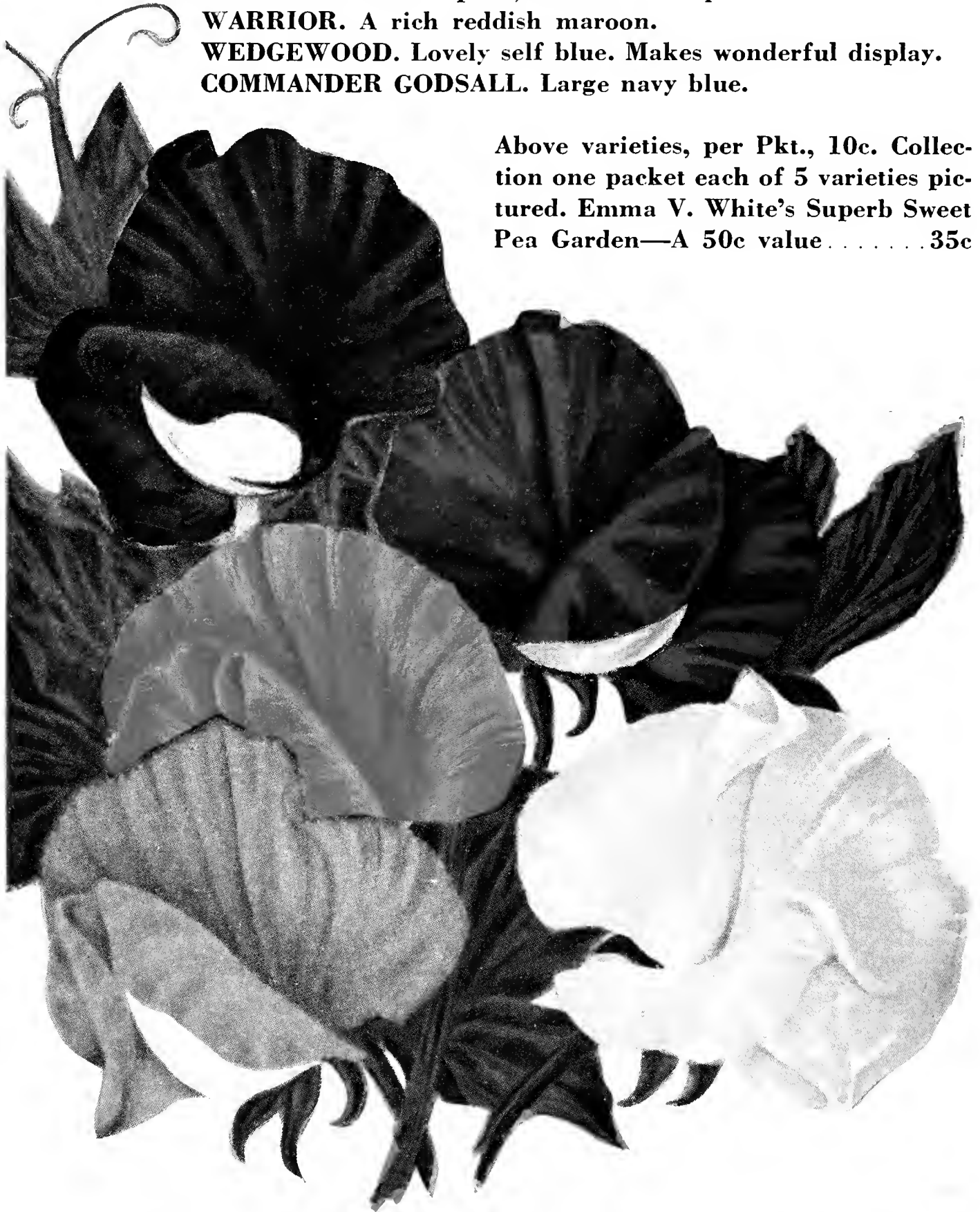
BARBARA. Salmon pink, blooms of exquisite texture.

WARRIOR. A rich reddish maroon.

WEDGEWOOD. Lovely self blue. Makes wonderful display.

COMMANDER GODSALL. Large navy blue.

Above varieties, per Pkt., 10c. Collection one packet each of 5 varieties pictured. Emma V. White's Superb Sweet Pea Garden—A 50c value 35c



ELEGANCE. Blush lilac, suffused delicate pink.

FIERY CROSS. Intense orange scarlet.

FORDHOOK ORANGE. Bright orange.

GEORGE HERBERT. A rich rosy carmine.

GRENADE. Bright geranium red flowers.

KING EDWARD. Deep rich crimson.

MARGARET ATLEE IMPROVED. Rose pink.

SPENCER MIXED.

KING WHITE. The best pure white.

POWERSCOURT. A pure lavender. Mammoth flowers.

ROYAL PURPLE. An excellent variety. Rich purple.

SUPREME. One of the best clear pinks. Soft and delicate.

SCARLET GLOW. Rich glowing scarlet red.

Above varieties Per Pkt. 10c, 1/2 oz. 20c, 1 oz. 35c.